

Flanged Full Port and Reduced Port Ball Valve
WCB ■ CF8M ■ Alloy20 ■ LF2 ■ Various other Alloys
ANSI 600 - (1/2" - 4")



SERIES FS600



**GLOBAL VALVE
& CONTROLS**



Providing Hundreds of Products. Supporting Thousands of Clients. Controlling Millions of Gallons.

DEPEND ON US. WE CAN HANDLE THE PRESSURE.



SERIES G



GF-3



CKF-2



SERIES CK



GLF-4



SERIES GL



NVG6000



NV10000



GLOBAL VALVE
& CONTROLS

Control > Quality
Flow >



20-RP



20-FP



SERIES SBG



SERIES EXPG



SERIES FS



BV2000



CFS



SERIES 2T/3T



BV3600



BV6000

BV3705



YFS w/ MCB



FS525



SERIES 790



SERIES 10



SERIES 800



SERIES FSD-61

Discover the difference!



Series FS600


- ◆ Sizes 1/2" - 4" ANSI Class 600
- ◆ 2-Piece Body **Floating** Flanged Design, Full or Reduced Port
- ◆ Carbon, Stainless steel, Alloy 20, A350 LF2
- ◆ Raised Face and Ring Type Joint Ends (RTJ)
- ◆ Maintenance Free Sealing
- ◆ Self-cleaning, Leak Tight Slotted Seat Design
- ◆ NACE MR0175 Approved
- ◆ B16.34, B16.10, B16.5 Compliant
- ◆ Design and Tested to API 6D
- ◆ Fire Tested according to API 607 Standards
- ◆ Blowout Proof, Anti-Static Stem Design
- ◆ Floating Ball Design prevents Cavity Pressure Build-up while the Valve is open
- ◆ Wide Variety of Exotic Alloys for Body and Trim
- ◆ Wide Choice of Seat Material



GLOBAL Valve & Controls®  is an ISO 9001 certified and API 6D, Q1 licensed valve manufacturer of Domestic and Non Domestic products. Offering Ball, Globe, Gate, Expanding Gate, Slab Gate, Check, and Needle Valves; Actuators and Automation Accessories.

 accommodates & services the Upstream, Midstream & Down-stream market segments of the oil/gas industry, with a primary focus on Natural Gas Transport and Storage Projects, as well as, the Petrochemical, Agricultural, Mining, Water/ Waste Management, and Aerospace Industrial Sectors.

GLOBAL Valve & Controls® has the right valve for the right application, ranging from ANSI 150 through 2500, sizes 1/4 to 48", in Stainless Steel, Carbon Steel, Alloy 20, Monel, Duplex, and other various exotic body materials.

 also carries fully automated valve packages, fugitive emission solutions, control packages, cryogenic valves, as well as, various valve coating solutions. Special Ordering is available!

GLOBAL Valve & Controls® continues to make strides in elevating our company beyond industry standards, by being consistent in providing products that are of superior quality and performance, dedicating ourselves to quality assurance, and being immediately responsive to our customer needs. We look forward to the opportunity to supply your valve needs!

Sincerely



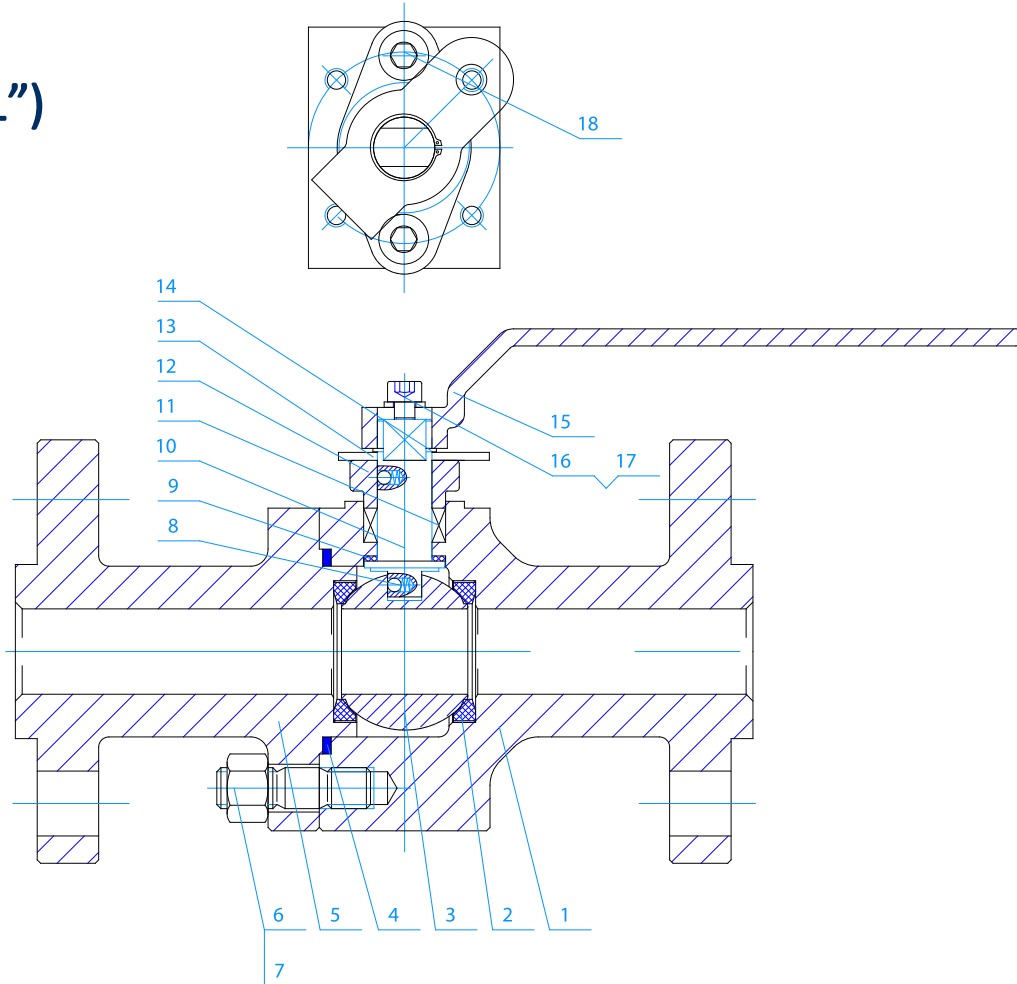
Troy Richard
CEO at GLOBAL Valve
& Controls



MATERIALS OF CONSTRUCTION

SERIES FS600

(1/2" - 1")



BILL OF MATERIALS

No.	PARTS	MATERIAL
1	Body	A105/ A216 WCB/ A351 CF8M/ A350 LF2/ CN7M
2	Seat	TFM/PEEK/RTFE/Devlon
3	Ball	SS316/410/CN7M/A350 LF2
4	Body Gasket	Graphite+304
5	Body Cap	A105/ A216 WCB/ A351 CF8M/ A350 LF2/ CN7M
6	Stud	ASTM A193 B7M/B8M/A320 L7M
7	Nut	ASTM A194 2HM/8M/A320 7M
8	Anti-Static Device	Assembly/F316
9	Thrust Bearing	PTFE

No.	PARTS	MATERIAL
10	Stem	SS316/410/CN7M/A350 LF2
11	Packing/Seals	Graphite
12	Gland	A105/ A216 WCB/ A351 CF8M/ A350 LF2/ CN7M
13	Stopper	A36+HZn
14	Snap Ring	65Mn
15	Lever	Carbon Steel/ Stainless Steel
16	Washer	AISI 1020
17	Bolt	ASTM A193 B7M
18	Bolt	ASTM A193 B7M

MANUFACTURING & TESTING STANDARDS

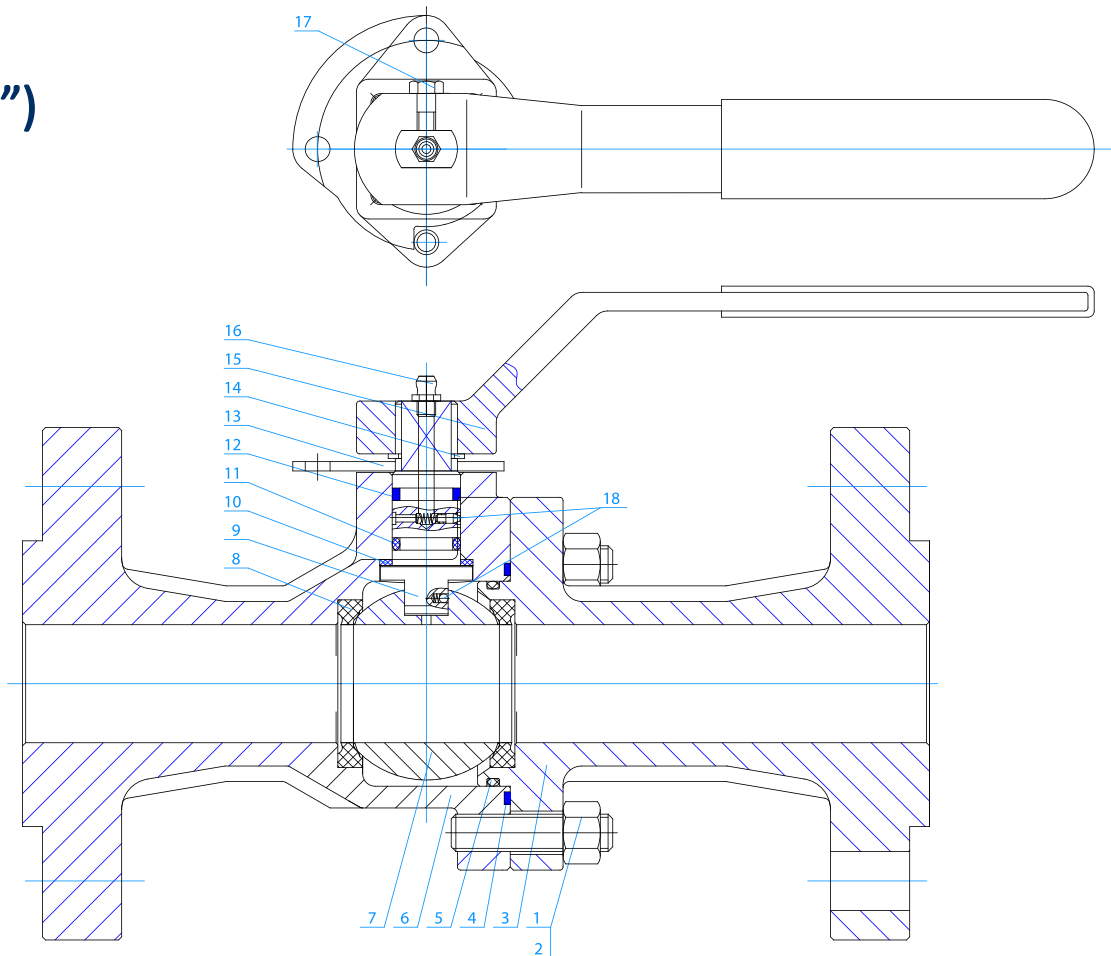
Design	ASME B16.34
	API 6D
Face to Face Dim	ASME B16.10
Flange Dimensions	ASME B16.5
Valve Wall Thickness	ASME B16.34
NACE	MR0175
Testing	API 6D
Firesafe	API 607



MATERIALS OF CONSTRUCTION

SERIES FS600

(2")



BILL OF MATERIALS

No.	PARTS	MATERIAL	No.	PARTS	MATERIAL
1	Stud	ASTM A193 B7M/B8M/A320 L7M	10	Thrust Bearing	PTFE
2	Nut	ASTM A194 2HM/8M/A320 7M	11	O-Ring	HNBR
3	Body Cap	A105/ A216 WCB/ A351 CF8M/ A350 LF2/ CN7M	12	Packing/Seals	Graphite
4	Body Gasket	Graphite+304	13	Stopper	A36+HZn
5	O-Ring	HNBR	14	Snap Ring	65Mn
6	Body	A105/ A216 WCB/ A351 CF8M/ A350 LF2 / CN7M	15	Lever	Carbon Steel/ Stainless Steel
7	Ball	SS316/410/CN7M/A350 LF2	16	Lubricating Cup	COPPER
8	Seat	TFM/PEEK/RTFE/Devlon	17	Bolt	ASTM A193 B7M
9	Stem	SS316/410/CN7M/A350 LF2	18	Anti-Static Device	Assembly/F316

MANUFACTURING & TESTING STANDARDS

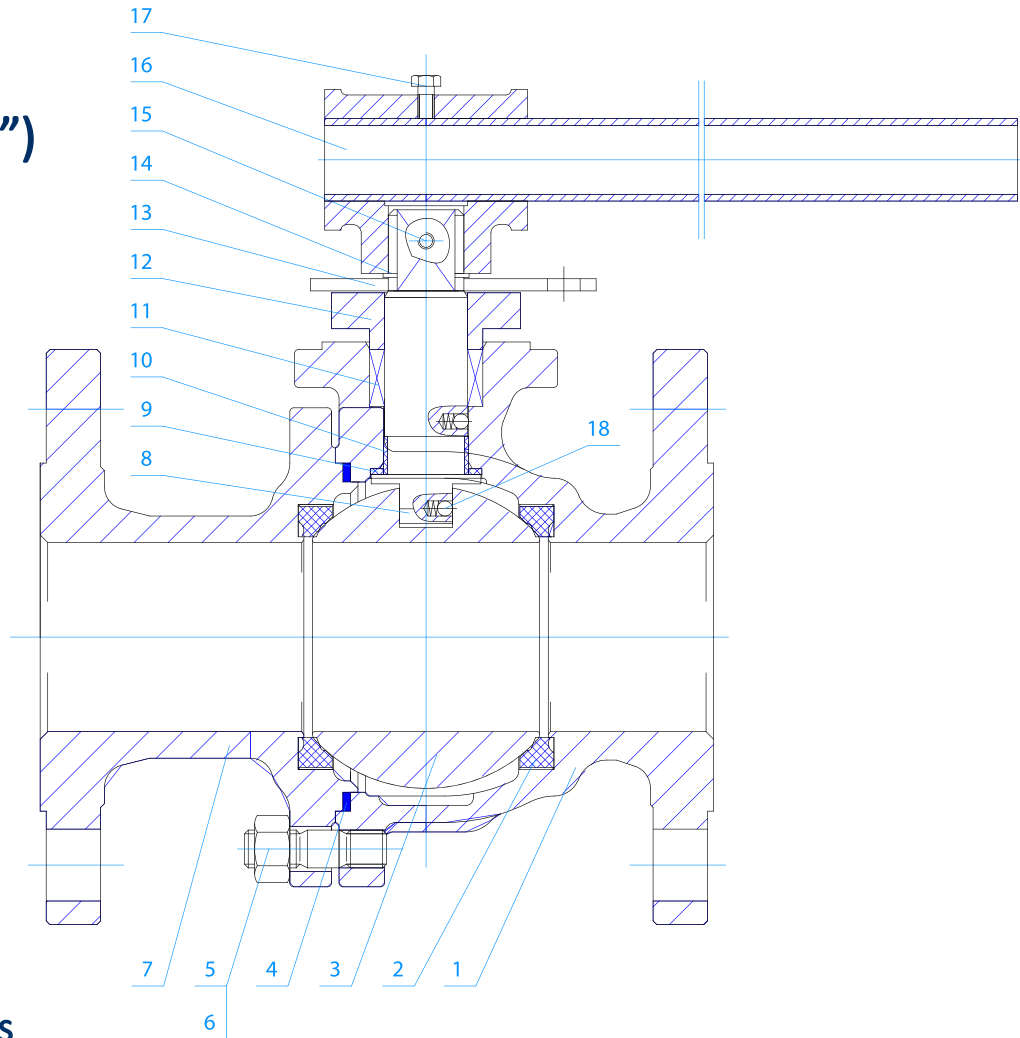
Design	ASME B16.34
	API 6D
Face to Face Dim	ASME B16.10
Flange Dimensions	ASME B16.5
Valve Wall Thickness	ASME B16.34
NACE	MR0175
Testing	API 6D
Firesafe	API 607



MATERIALS OF CONSTRUCTION

SERIES FS600

(3" & 4")



BILL OF MATERIALS

No.	PARTS	MATERIAL	No.	PARTS	MATERIAL
1	Body	A105/ A216 WCB/ A351 CF8M/ A350 LF2/ CN7M	10	Stem Bearing	Metal Packed PTFE
2	Seat	TFM/PEEK/RTFE/Devlon	11	Packing/Seals	Graphite
3	Ball	SS316/410/CN7M/A350 LF2	12	Gland	A105/ A216 WCB/ A351 CF8M/ A350 LF2/ CN7M
4	Body Gasket	Graphite+304	13	Stopper	A36+HZn
5	Stud	ASTM A193 B7M/B8M/A320 L7M	14	Snap Ring	65Mn
6	Nut	ASTM A194 2HM/8M/A320 7M	15	Bolt	ASTM A193 B7M
7	Body Cap	A105/ A216 WCB/ A351 CF8M/ A350 LF2/ CN7M	16	Lever	Carbon Steel/ Stainless Steel
8	Stem	SS316/410/CN7M/A350 LF2	17	Bolt	ASTM A193 B7M
9	Thrust Bearing	PTFE	18	Anti-Static Device	Assembly/F316

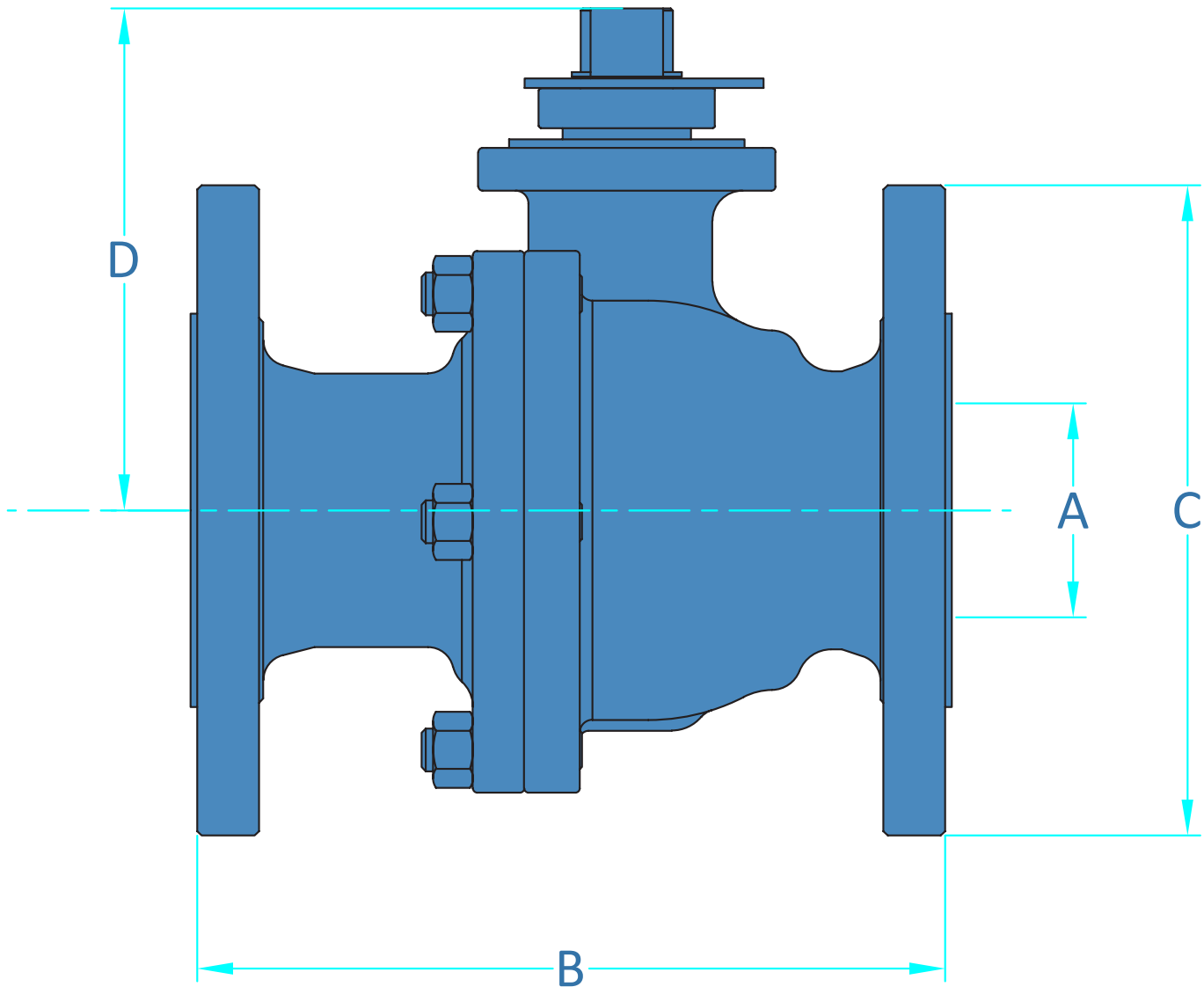
MANUFACTURING & TESTING STANDARDS

Design	ASME B16.34
	API 6D
Face to Face Dim	ASME B16.10
Flange Dimensions	ASME B16.5
Valve Wall Thickness	ASME B16.34
NACE	MR0175
Testing	API 6D
Firesafe	API 607



MATERIALS AND ENGINEERING DATA

SERIES FS600



Dimension Chart

UNIT	SIZE	1/2 "	3/4 "	1"	2"	3"	4"
in	A	1/2	3/4	1	2	3	4
mm		15	20	25	50	80	100
in	B	6.5	7.5	8.5	11.5	14	17
mm		165	190	216	292	356	432
in	C	3.75	4.5	4.92	6.5	8.25	10.83
mm		95	115	125	165	210	275
in	D	2.13	2.6	2.68	4.13	6.75	7.75
mm		53.5	66	68	105	171	197.5

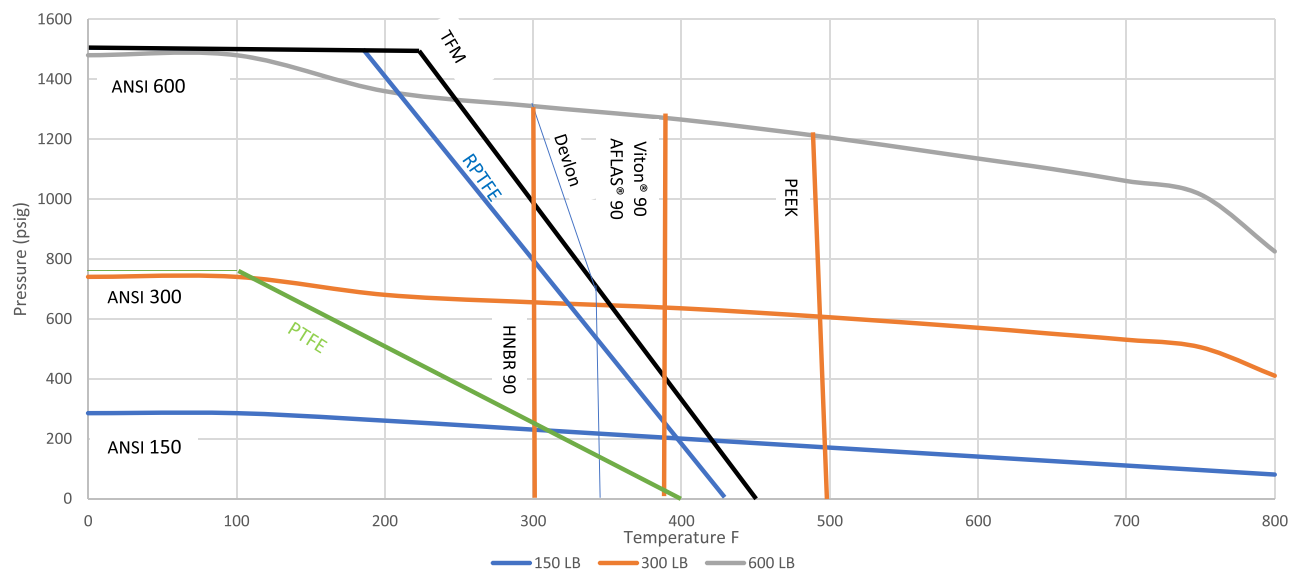
PRESSURE TEMPERATURE CHART SERIES FS600

Pressure Temperature Rating			
Temperature (F)	ANSI 150 (PSIG)	ANSI 300 (PSIG)	ANSI 600 (PSIG)
0	285	740	1480
100	285	740	1480
200	260	680	1360
300	230	655	1310
400	200	635	1265
500	170	605	1205
600	140	570	1135
650	125	550	1100
700	110	530	1060
750	95	505	1015
800	80	410	825

Temperature Limits						
			Fahrenheit(F)		Celsius C	
	Material	Specification	Min	Max	Min	Max
Body	Carbon Steel	ASTM A105/A216WCB	-20	800	-29	427
	Low Temp Carbon Steel	ASTM A350 LF2	-50	800	-46	427
Seat	Stainless Steel	ASTM A182 F316	-425	850	-254	454
	TFM 1600	TFM 1600	-328	500	-200	260
	Devlon	DEVLON	-50	350	-46	177
	PEEK	PEEK	-148	500	-100	260
	RPTFE	RPTFE	-320	450	-196	232
Seal	PTFE	PTFE	-80	400	-62	204
	HNBR 90	HNBR90	-50	302	-46	150
	Viton 90	Viton 90	-50	392	-46	200
	AFLAS 90	AFLAS 90	5	392	-15	200

Standard valve configurations use seals compatible with temperatures down to -40 F (-40C)

PT Graph of Standard Class A216-WCB, A105



*GVC reserves the right to change design, materials or specifications without notice *REFERENCE ONLY

HOW TO ORDER

SERIES FS600



SERIES FS600

- ◆ Sizes 1/2" – 4" 2-Piece Flanged Floating Design
- ◆ Full or Reduced Port, Maintenance Free Sealing
- ◆ API 608, API 6D, NACE MR0175 Approved
- ◆ B16.34, B16.10, B16.5 Compliant
- ◆ Fire Safe Design API 607, Anti-Static Device
- ◆ Blowout Proof Stem with Heavy Duty Travel Stopper

Series	Class	Body	Trim	Seats	Seals	Ends	Operator	Options	Size
Series FS (Full Port)	60 - 600	1 - CS A216	2 - Alloy 20	H - TFM	G - Grafoil	RF - Raised Face	L - Lever Handle	X - Special	1/2" - 4"
Series RFS (Reduced Port)		1A - CS A105	3 - 316SS	P - PEEK					
		2 - Alloy 20	4 - A276 Grade 410	R - Reinforced Teflon		RTJ - Ring Type Joint	GO - Gear Operator		
		3 - CF8M 316SS	5 - A350 LF2	D - Devlon					
		3A - F316	X - Special						
		5 - A350 - LF2							
		X - Special							

FS	600	1	3	D	G	RF	L		-02
Series	Class	Body	Trim	Seats	Seals	Ends	Operator	Options	Size

Description:

2" Class 600, 2-Piece Floating Design, Raised Face, Full Port, A216-WCB Cast Body, F316 Stainless Steel Trim, Fire-safe, Devlon Seats with Graphite Stem Packing and Gaskets, Anti-Static Device, Solid Ball, Blowout Proof Stem with Heavy Duty Travel Stopper with Secure Locking Handle. Designed to API 6D, API 608, B16.34, B16.5, B16.10, Fire-tested to API 607, Tested to API 6D, NACE MR0175 Approved

PLEASE NOTE: There may be some performance variations between the GVC Series FS600 and other manufacturer's comparable body designs. To ensure the longevity of performance, please provide specific information relevant to the requirements needed for each application process.



8535 Jackrabbit Rd., Ste i
Houston, TX 77095
866.965.8GVC (482)
281.463.1474 office
281.463.7735 fax
www.GVCINTL.com

Please contact our sales representatives to receive more information regarding your systems particular needs.

Due to the ongoing development of our product line, Global Valve & Controls reserves the right to change the dimensions contained in the leaflet, as required.