

Flanged Full Port and Reduced Port Ball Valve
WCB • CF8M • Alloy20 • LCC • Various other Alloys
ANSI 150-300 (2" - 12")



SERIES CFS



**GLOBAL VALVE
& CONTROLS**



Providing Hundreds of Products. Supporting Thousands of Clients. Controlling Millions of Gallons.

DEPEND ON US. WE CAN HANDLE THE PRESSURE.



SERIES G



GF-3



SERIESCK



GLF-4



SERIESGL



CKF-2



NVG6000



NV10000



GLOBAL VALVE & CONTROLS



20-RP



20-FP



SERIES SBG



SERIES EXPG



SERIES FS



BV2000



SERIES 2T/3T



BV3600



BV6000



CFS



SERIES 30

BV3705



YFS w/ MCB



FS525



SERIES 790



SERIES 10



SERIES 800



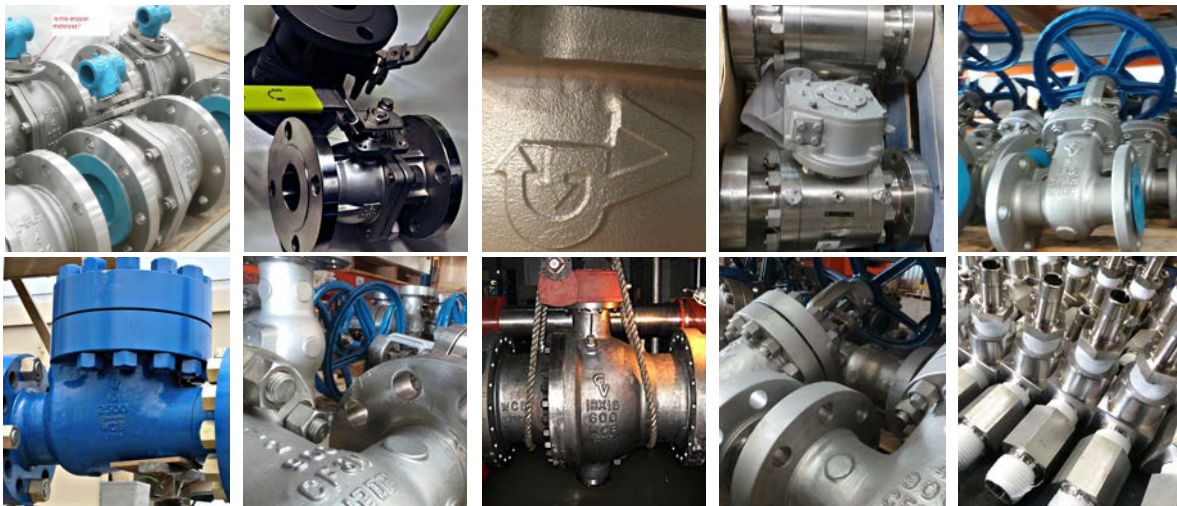
SERIES FSD-61

Discover the difference!



Series CFS


- ◆ Sizes 2" - 12" ANSI Class 150-300
- ◆ 2-Piece Body **Floating** Flanged Design, Full or Reduced Port
- ◆ Carbon, Stainless steel, Alloy 20, A352-LCC
- ◆ Raised Face and Ring Type Joint Ends (RTJ)
- ◆ Fully Encapsulated Body Seals
- ◆ Self-cleaning, Leak Tight Slotted Seat Design
- ◆ NACE MR0175 Approved
- ◆ B16.34, B16.10, B16.5, API 608 Compliant
- ◆ Design and Tested to API 6D
- ◆ Fire Tested according to API 607 Standards
- ◆ Blowout Proof, Anti-Static Stem Design
- ◆ Floating Ball Design prevents Cavity Pressure Build-up while the Valve is open
- ◆ Wide Variety of Exotic Alloys for Body and Trim
- ◆ Wide Choice of Seat Material (TFM Standard)



GLOBAL Valve & Controls®  is an ISO 9001 certified and API 6D, Q1 licensed valve manufacturer of Domestic and Non Domestic products. Offering Ball, Globe, Gate, Expanding Gate, Slab Gate, Check, and Needle Valves; Actuators and Automation Accessories.

 accommodates & services the Upstream, Midstream & Down-stream market segments of the oil/gas industry, with a primary focus on Natural Gas Transport and Storage Projects, as well as, the Petrochemical, Agricultural, Mining, Water/ Waste Management, and Aerospace Industrial Sectors.

GLOBAL Valve & Controls® has the right valve for the right application, ranging from ANSI 150 through 2500, sizes 1/4 to 48", in Stainless Steel, Carbon Steel, Alloy 20, Monel, Duplex, and other various exotic body materials.

 also carries fully automated valve packages, fugitive emission solutions, control packages, cryogenic valves, as well as, various valve coating solutions. Special Ordering is available!

GLOBAL Valve & Controls® continues to make strides in elevating our company beyond industry standards, by being consistent in providing products that are of superior quality and performance, dedicating ourselves to quality assurance, and being immediately responsive to our customer needs. We look forward to the opportunity to supply your valve needs!

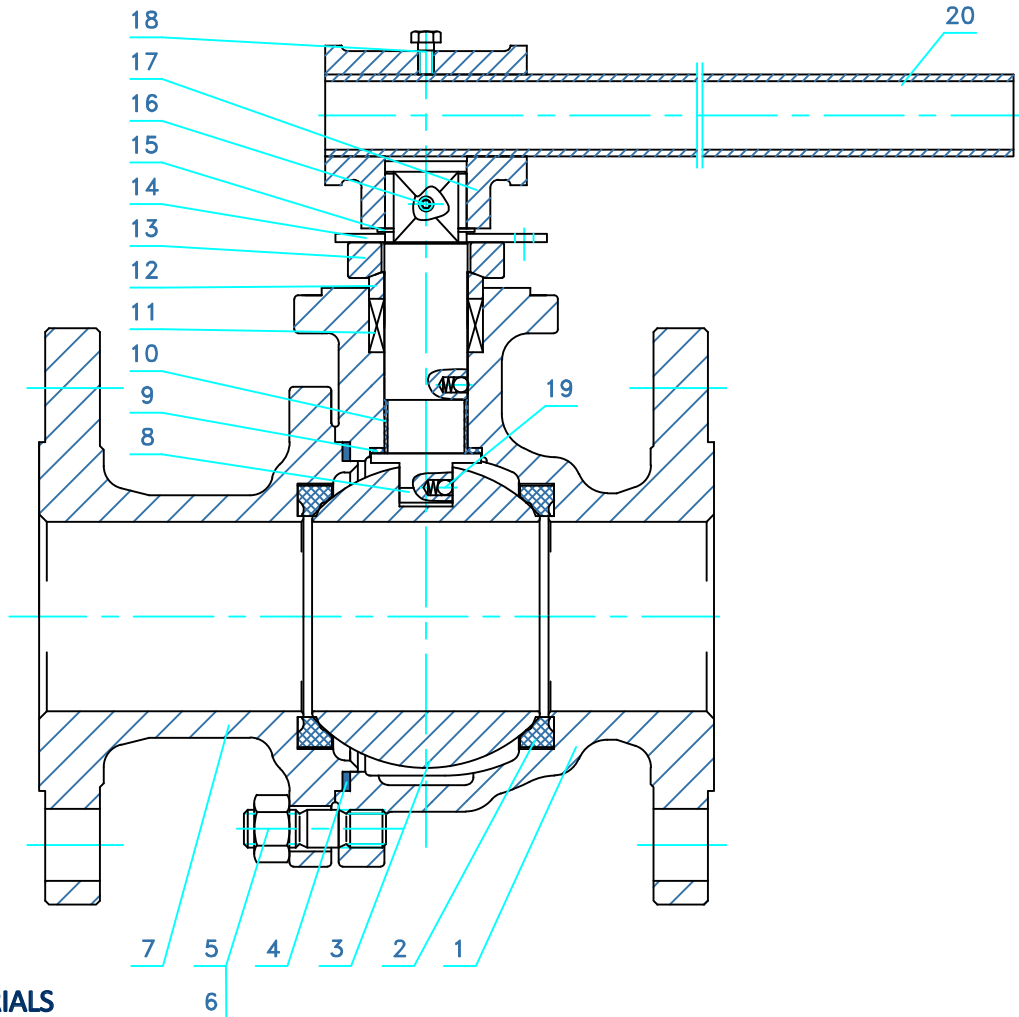
Sincerely

Troy Richard
CEO at GLOBAL Valve
& Controls



MATERIALS OF CONSTRUCTION

SERIES CFS



BILL OF MATERIALS

No.	PARTS	MATERIAL
1	Body	A216 WCB/A351 CF8M/A352 LCC/ CN7M
2	Seat	TFM/PEEK/RTFE/Teflon
3	Ball	SS316/410/CN7M
4	Body Gasket	Graphite+304/HNBR/Viton/ Teflon
5	Stud	ASTM A193 B7M/B8M/ A320 L7M
6	Nut	ASTM A194 2HM/8M/ A320 7M
7	Left Body	A216 WCB/A351 CF8M/A352 LCC/ CN7M
8	Stem	SS316/410/CN7M
9	Thrust Bearing	PTFE
10	Stem Bearing	PTFE

No.	PARTS	MATERIAL
11	Stem Packing/Seals	Graphite/HNBR/Viton
12	Packing Gland	ASTM A182 F6A
13	Gland Flange	A216 WCB/A351 CF8M/A352 LCC/ CN7M
14	Stopper	A3+HZn
15	Snap Ring	65Mn
16	Bolt	Plated Carbon Steel
17	"T" Joint	A216 WCB/A351 CF8M/A352 LCC/ CN7M
18	Bolt	Plated Carbon Steel
19	Antistatic Device	Assembly/F316
20	Lever	Carbon Steel/Stainless Steel

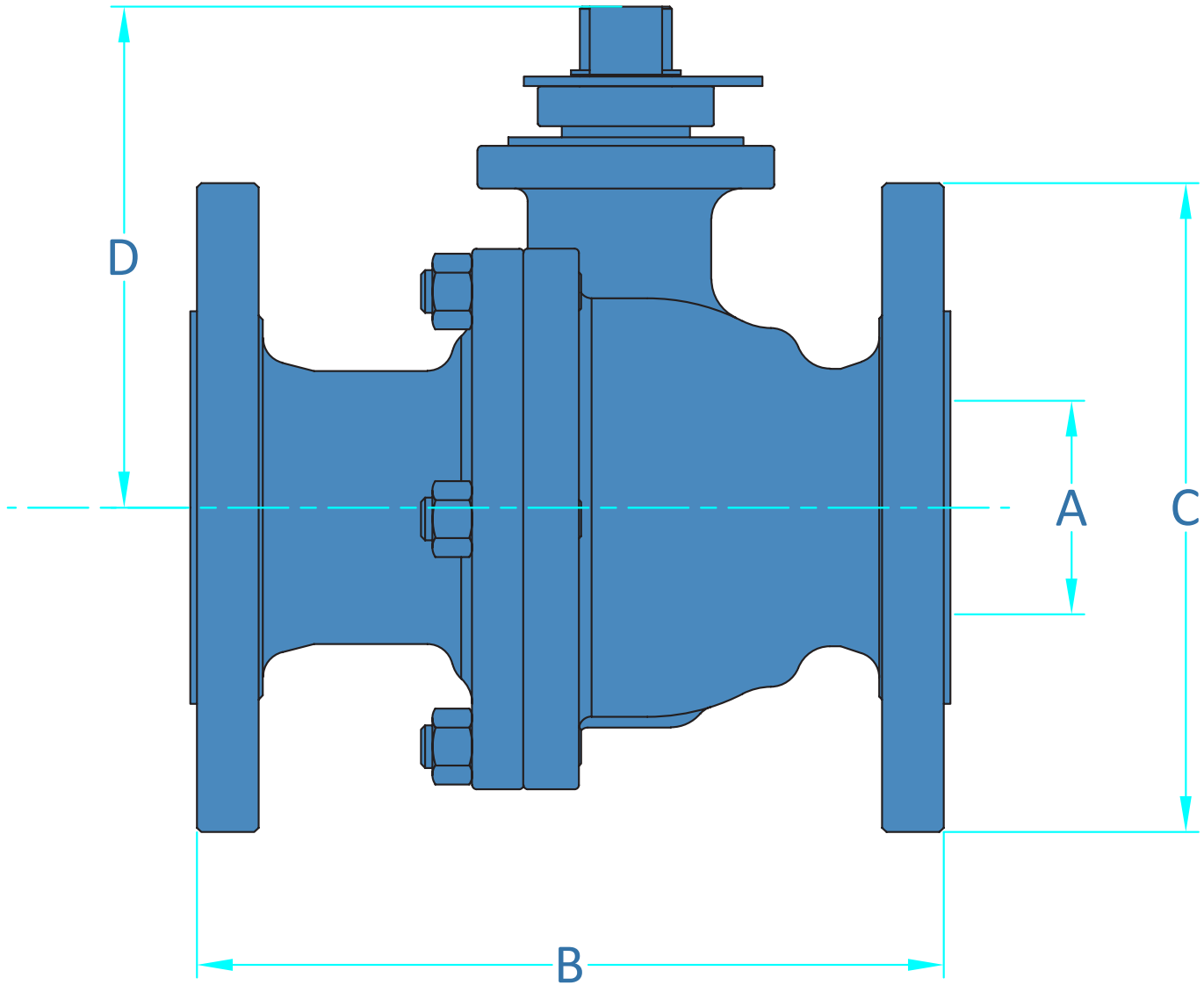
MANUFACTURING & TESTING STANDARDS

Design	ASME B16.34
	API 6D
Face to Face Dim	ASME B16.10
Flange Dimensions	ASME B16.5
Valve Wall Thickness	ASME B16.34
NACE	MR0175
Testing	API 6D
Firesafe	API 607



MATERIALS AND ENGINEERING DATA

SERIES CFS



Dimension Chart

UNIT	SIZE	2"FP	2"RP	3"FP	3"RP	4"FP	4"RP	6"FP	6"RP	8"FP	8"RP
in mm	A	2 50.8	2x1.5 50.8 x 38.1	3 76.2	3x2 76.2 x 50.8	4 101.6	4x3 101.6 x 76.2	6 152.4	6x4 152.4 x 101.6	8 203.2	8x6 203.2 x 152.4
in mm	B (150)RF	7 177.8	7 177.8	8 203.2	8 203.2	9 228.6	9 228.6	15.5 393.7	15.5 393.7	18 457.2	18 457.2
in mm	B (300)RF	8.5 215.9	8.5 215.9	11.13 282.7	11.13 282.7	12 304.8	12 304.8	15.88 403.3	15.88 403.3	----- -----	----- -----
in mm	C (150)	6 152.4	6 152.4	7.5 190.5	7.5 190.5	9 228.6	9 228.6	11 279.4	11 279.4	13.5 342.9	13.5 342.9
in mm	C (300)	6.5 165.1	6.5 165.1	8.25 209.5	8.25 209.5	10 254	10 254	12.5 317.5	12.5 317.5	----- -----	----- -----
in mm	D (150)	4.65 118.1	----- -----	6.13 155.7	----- -----	6.13 155.7	----- -----	10 254	----- -----	13.5 342.9	----- -----
in mm	D (300)	4.65 118.1	----- -----	6.13 155.7	----- -----	7 177.8	----- -----	10 254	----- -----	----- -----	----- -----



PRESSURE TEMPERATURE CHART

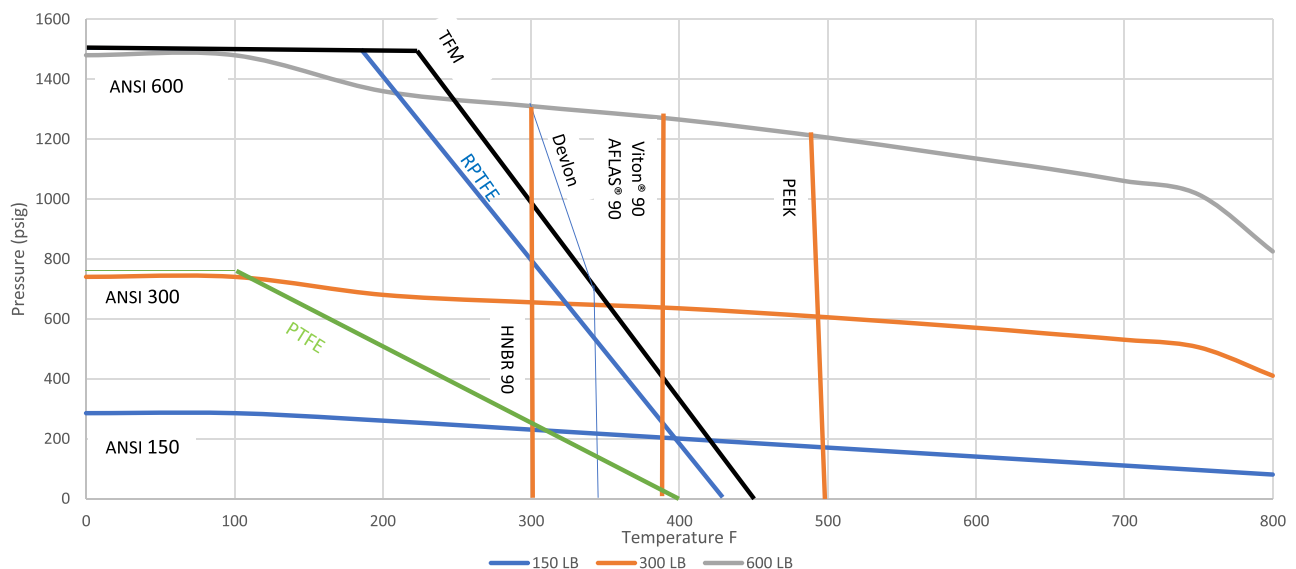
SERIES CFS

Pressure Temperature Rating			
Temperature (F)	ANSI 150 (PSIG)	ANSI 300 (PSIG)	ANSI 600 (PSIG)
0	285	740	1480
100	285	740	1480
200	260	680	1360
300	230	655	1310
400	200	635	1265
500	170	605	1205
600	140	570	1135
650	125	550	1100
700	110	530	1060
750	95	505	1015
800	80	410	825

Temperature Limits						
	Material	Specification	Fahrenheit(F)		Celsius C	
			Min	Max	Min	Max
Body	Carbon Steel	ASTM A105/A216WCB	-20	800	-29	427
	Low Temp Carbon Steel	ASTM A350 LF2	-50	800	-46	427
Seat	Stainless Steel	ASTM A182 F316	-425	850	-254	454
	TFM 1600	TFM 1600	-328	500	-200	260
	Devlon	DEVLON	-50	350	-46	177
	PEEK	PEEK	-148	500	-100	260
	RPTFE	RPTFE	-320	450	-196	232
Seal	PTFE	PTFE	-80	400	-62	204
	HNBR 90	HNBR90	-50	302	-46	150
	Viton 90	Viton 90	-50	392	-46	200
	AFLAS 90	AFLAS 90	5	392	-15	200

Standard valve configurations use seals compatible with temperatures down to -40 F (-40C)

PT Graph of Standard Class A216-WCB, A105



*GVC reserves the right to change design, materials or specifications without notice *REFERENCE ONLY



HOW TO ORDER

SERIES CFS



SERIES CFS

- ◆ Sizes 2 – 12” 2-Piece Flanged Floating Design
- ◆ Full or Reduced Port
- ◆ API-608, API-6D, NACE MR0175 Compliant
- ◆ B16.34, B16.10, B16.5, Compliant
- ◆ Fire Safe Design API 607, ISO 5211 Mounting Pad, Anti-Static Device
- ◆ Blowout Proof Stem with Heavy Duty

Series	Class	Body	Trim	Seats	Seals	Ends	Operator	Options	Size
Series CFS (Full Port)	15 - 150	1 - Carbon Steel	2 - Alloy 20	H - TFM	G - Grafoil	RF - Raised Face	L - Lever Handle	SE - Stem Extension	2" - 12"
Series RCFS (Reduced Port)	30 - 300	2 - Alloy 20	3 - 316SS	P - PEEK	H - HNBR		GO - Gear Operator	X - Special	
		3 - 316SS	4 - A276 Grade 410	R - Reinforced Teflon	T - Teflon				
		5 - A352 - LCC	L - A350 LF2	T - Teflon					
		X - Special	X - Special						

CFS	150	1	3	H	G	RF	L		-02
Series	Class	Body	Trim	Seats	Seals	Ends	Operator	Options	Size

Description:

2" Class150, 2-Piece Floating Design, Raised Face, Full Port, A216-WCB Investment Cast Body, F316 Stainless Steel Trim, Fire-safe, TFM Seats with Graphite Stem Packing and Gaskets, ISO 5211 Mounting Pad, Anti-Static Device, Solid Ball, Blowout Proof Stem with Heavy Duty Travel Stopper with Secure Locking Handle. Designed to API 6D, API 608, B16.34, B16.5, B16.10, Fire-tested to API 607, Tested to API 6D, NACE MR0175 Compliant

PLEASE NOTE: There may be some performance variations between the GVC Series CFS and other manufacturer's comparable body designs. To ensure the longevity of performance, please provide specific information relevant to the requirements needed for each application process.



8535 Jackrabbit Rd., Ste i
Houston, TX 77095
866.965.8GVC (482)
281.463.1474 office
281.463.7735 fax
www.GVCINTL.com