

Cast Steel Gate Valve
WCB ■ CF8M ■ Alloy 20 ■ Various other Alloys
ANSI 150-300-600-900-1500-2500 (2" - 48")

SERIES G



GLOBAL VALVE
& CONTROLS



Providing Hundreds of Products. Supporting Thousands of Clients. Controlling Millions of Gallons.

DEPEND ON US. WE CAN HANDLE THE PRESSURE.



SERIES G



GF-3



CKF-2



SERIES CK



GLF-4



SERIES GL



NVG6000



NV10000



GLOBAL VALVE
& CONTROLS

Control > Quality
Flow >



20-RP



20-FP



SERIES SBG



SERIES EXPG



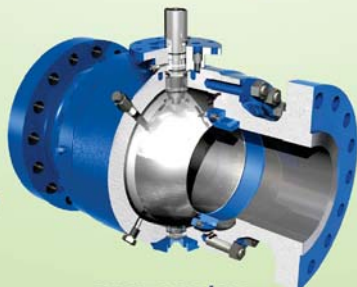
SERIES FS



BV2000



CFS



SERIES 2T/3T



BV3600



BV6000

BV3705



SERIES 30



YFS w/ MCB



FS525



SERIES 790



SERIES 10



SERIES 800



SERIES FSD-61

Discover the difference!



Series G


- ◆ Sizes 2" - 48"
- ◆ ANSI Class 150-2500
- ◆ Cast Steel **Gate**
- ◆ API 600 Design
- ◆ Bolted Bonnet Design, O S & Y
- ◆ Rising Stem
- ◆ Flexible Wedge, Fully Guided
- ◆ WCB, CF8M, Alloy 20 and Various Other Alloys available
- ◆ Low Emissions Packing Design
- ◆ NACE MR0175 Compliant
- ◆ B16.10
- ◆ B16.5
- ◆ B16.34
- ◆ Butt Weld, Raised Face, and Ring Type Joint Ends (RTJ)
- ◆ **Pressure Seal ANSI 1500 & 2500 Optional**



GLOBAL Valve & Controls®  is an ISO 9001 certified and API 6D, Q1 licensed valve manufacturer of Domestic and Non Domestic products. Offering Ball, Globe, Gate, Expanding Gate, Slab Gate, Check, and Needle Valves; Actuators and Automation Accessories.

 accommodates & services the Upstream, Midstream & Down-stream market segments of the oil/gas industry, with a primary focus on Natural Gas Transport and Storage Projects, as well as, the Petrochemical, Agricultural, Mining, Water/ Waste Management, and Aerospace Industrial Sectors.

GLOBAL Valve & Controls® has the right valve for the right application, ranging from ANSI 150 through 2500, sizes 1/4 to 48", in Stainless Steel, Carbon Steel, Alloy 20, Monel, Duplex, and other various exotic body materials.

 also carries fully automated valve packages, fugitive emission solutions, control packages, cryogenic valves, as well as, various valve coating solutions. Special Ordering is available!

GLOBAL Valve & Controls® continues to make strides in elevating our company beyond industry standards, by being consistent in providing products that are of superior quality and performance, dedicating ourselves to quality assurance, and being immediately responsive to our customer needs. We look forward to the opportunity to supply your valve needs!

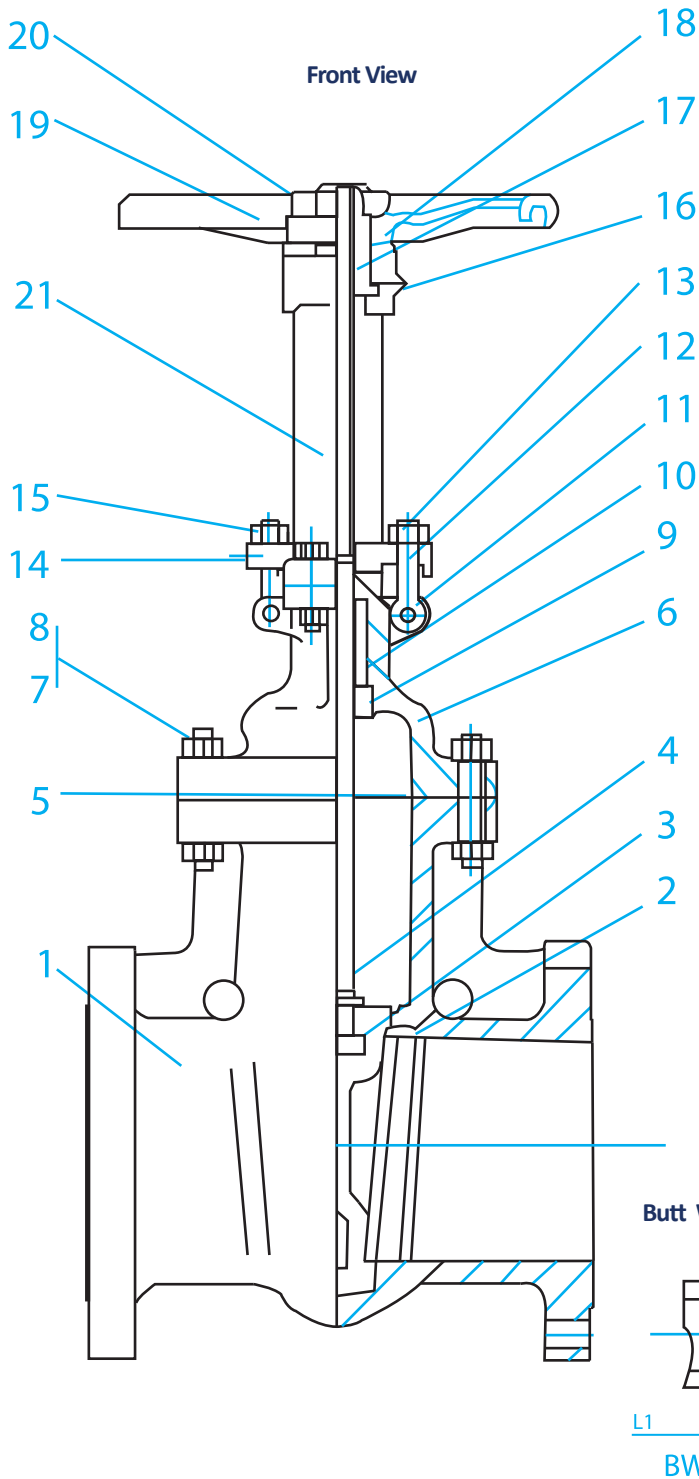
Sincerely

Troy Richard
CEO at GLOBAL Valve
& Controls



MATERIALS OF CONSTRUCTION

SERIES G



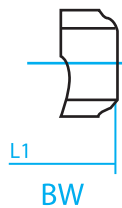
Bill of Materials

MATERIAL LIST					
NO.	Part Name	ASTM Specifications (Specs. - Grades/Type)			
1	Body	A 216-WCB	A352-LCC	A217-WC6	A351-CF8M
2	Seat Ring	API Trim #5, 8, 10 & 12			
3	Gate	API Trim #5, 8, 10 & 12			
4	Stem	API Trim #5, 8, 10 & 12			
5	Gasket	Soft Iron Spiral Wound			
6	Bonnet	A216-WCB	A352-LCC	A217-WC6	A351-CF8M
7	Bonnet Nuts	A194-2HM	A194-4	A194-2H	A194-8M A194-8
8	Bonnet Studs	A193-B7M	A320-L7	A194-B8M /B8	
9	Bonnet Bushing	13CR, 316 OR 304			
10	Packing	Braided Graphite & Die formed Graphite Ring. PTFE			
11	Gland Eye Bolt Pins	Carbon Steel/Stainless Steel			
12	Gland Eye Bolts	A193-B7M	A320-L7	A193-B8M	A193-B8
13	Gland	13CR, 316 OR 304			
14	Gland Flange	A216-WCB	A352-LCC	A217-WC6	A351-CF8M
15	Gland Eye Bolt Nuts	A194-2HM	A194-7M	A194-8M	A194-8
16	Grease Nipple	Carbon Steel			
17	Yoke Sleeve	ASTM A439 GR D2C			
18	Retaining Nut	Carbon Steel/ Stainless Steel			
19	Handwheel	Malleable Iron			
20	Handwheel Nut	Carbon Steel			
21	Yoke	A216-WCB	A352-LCC	A217-WC6	A351-CF8M

DESIGN STANDARDS

MANUFACTURING & TESTING STANDARDS	
Face to Face	ASME B16.10
Temperature/Pressure Rating	ASME B16.34
End Flanges	ASME B16.5
Inspection and Test	API 598
Butt Welding Ends	ASME B16.25
Base Design	API 600
NACE	MR0175

Butt Weld



Ring Type Joint





MATERIALS AND ENGINEERING DATA

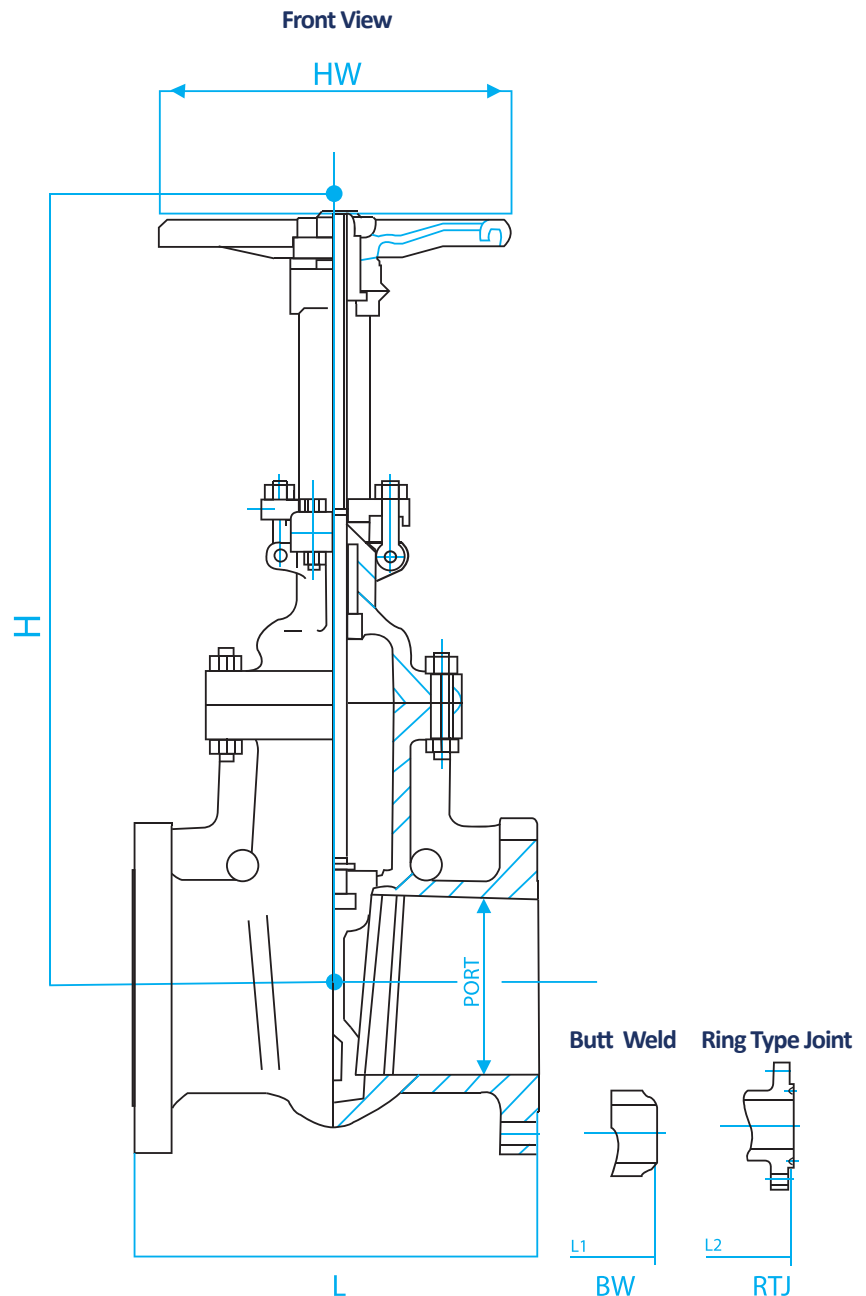
SERIES G

CLASS 150

Class 150							
Unit	Size	L	L1	L2	HW	H	Weight
in	2	7	7.5	8.5	8	13.43	44
mm	50	178	191	216	200	341	20
in	2 1/2	7.5	8	9.5	8	14.61	66
mm	65	190	203	241	200	371	30
in	3	8	8.5	11.13	10	15.83	72.75
mm	80	203	216	283	250	402	33
in	4	9	9.5	12	11	18.58	108
mm	100	229	241	305	280	472	49
in	6	10.5	11	15.88	12	23.11	165
mm	150	267	279	403	300	587	75
in	8	11.5	12	16.5	14	29.25	264.5
mm	200	292	305	419	350	743	120
in	10	13	13.5	18	16	35.59	452
mm	250	330	343	457	400	904	205
in	12	14	14.5	19.75	18	41.22	639
mm	300	356	368	502	450	1047	290
in	14	15	15.5	22.5	20	46.14	881.5
mm	350	381	394	572	500	1172	400
in	16	16	16.5	24	24	51.06	1126
mm	400	406	419	610	600	1297	511
in	18	17	17.5	26	26.75	56.42	1432.5
mm	450	432	445	660	680	1433	650
in	20	18	18.5	28	29.5	62.6	1739
mm	500	457	470	711	750	1590	789
in	24	20	20.5	32	31.5	74.72	2645
mm	600	508	521	813	800	1898	1200
in	30	24	-	36	-	91.73	5642.5
mm	750	610	-	914	-	2330	2560
in	36	28	-	41.75	-	110.24	7714
mm	900	711	-	1060	-	2800	3500
in	40	30	-	42	-	-	-
mm	1000	762	-	1067	-	-	-
in	42	31	-	44	-	-	-
mm	1050	787	-	1118	-	-	-
in	48	36	-	-	-	-	-
mm	1200	914	-	-	-	-	-

CLASS 300

Class 300							
Unit	Size	L	L1	L2	HW	H	Weight
in	2	8.5	9.13	8.5	8	13.43	53
mm	50	216	232	216	200	345	24
in	2 1/2	9.5	10.13	9.5	8	14.8	79
mm	65	241	257	241	200	376	36
in	3	11.13	11.75	11.13	10	16	103.5
mm	80	283	298	283	250	407	47
in	4	12	12.63	12	12	18.82	152
mm	100	305	321	305	300	478	69
in	6	15.88	16.5	15.88	14	24.33	271
mm	150	403	419	403	350	618	123
in	8	16.5	17.13	16.5	16	30.12	432
mm	200	419	435	419	400	765	196
in	10	18	18.63	18	18	36.57	734
mm	250	457	473	457	450	929	333
in	12	19.75	20.38	19.75	20	43.07	970
mm	300	502	518	502	500	1094	440
in	14	30	30.63	30	22	46.77	1565
mm	350	762	778	762	550	1188	710
in	16	33	33.63	33	26.75	52.32	2094
mm	400	838	854	838	680	1329	950
in	18	36	36.63	36	29.5	57.28	3097
mm	450	914	930	914	750	1455	1405
in	20	39	39.75	39	36.25	73.23	3791
mm	500	991	1010	991	920	1860	1720
in	24	45	45.88	45	-	79.92	6105
mm	600	1143	1165	1143	-	2030	2770
in	30	55	56	55	-	-	9037
mm	750	1397	1422	1397	-	-	4100
in	36	68	69	68	-	-	14767
mm	900	1727	1755	1727	-	-	6700
in	40	-	-	-	-	-	-
mm	1000	-	-	-	-	-	-
in	42	-	-	-	-	-	-
mm	1050	-	-	-	-	-	-
in	48	-	-	-	-	-	-
mm	1200	-	-	-	-	-	-



KEY

NO.	PART NAME
L	LENGTH (END TO END)
L1	LENGTH (END TO END BUTTWELD ONLY)
L2	LENGTH (END TO END RTJ ONLY)
H	HEIGHT (CENTER OF BORE TO OF VALVE)
HW	USED WHEN HANDWHEEL (HW)

DESIGN STANDARDS

MANUFACTURING & TESTING STANDARDS	
Face to Face	ASME B16.10
Temperature/Pressure Rating	ASME B16.34
End Flanges	ASME B16.5
Inspection and Test	API 598
Butt Welding Ends	ASME B16.25
Base Design	API 600
NACE	MR0175

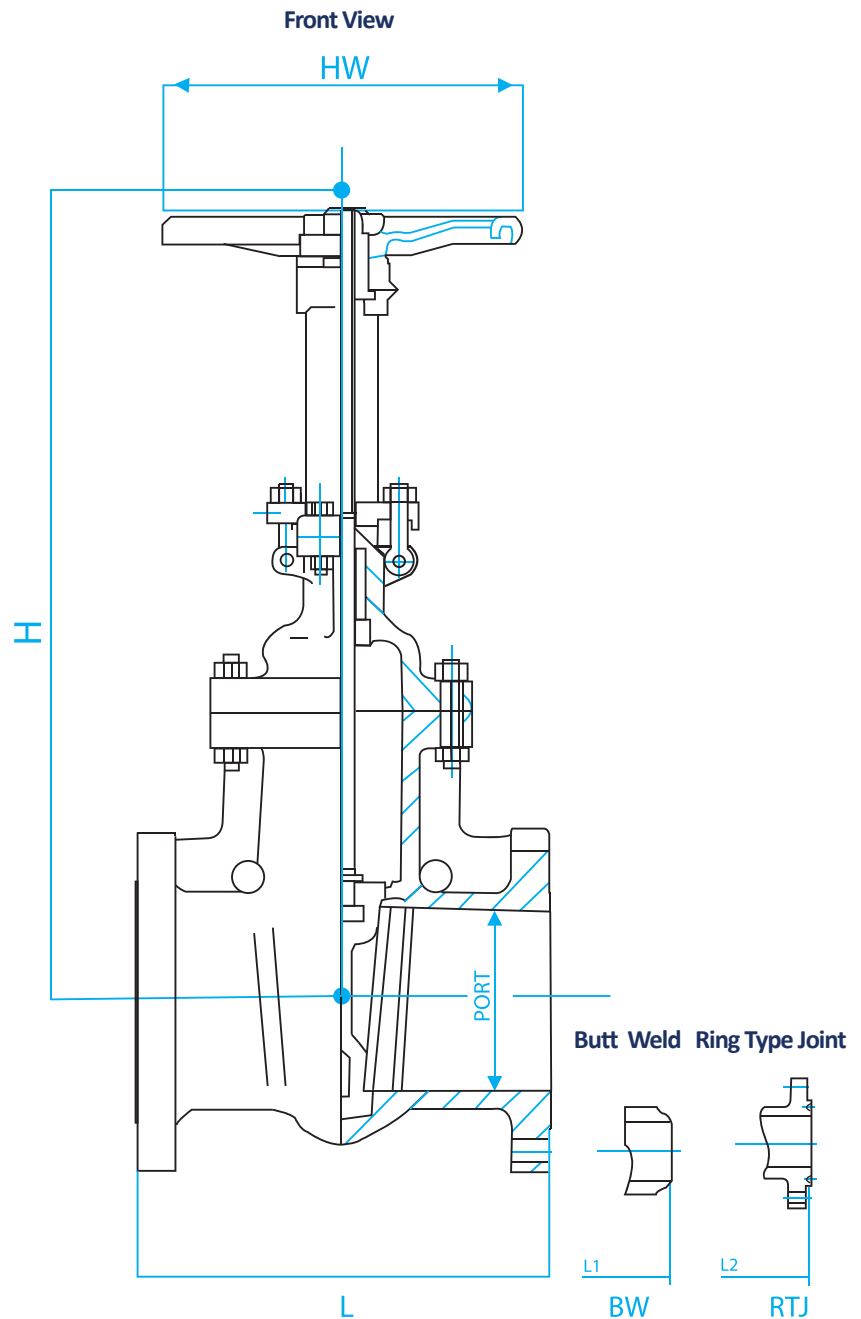


MATERIALS AND ENGINEERING DATA

SERIES G

CLASS 600

Class 600							
Unit	Size	L	L1	L2	HW	H	Weight
in	2	11.5	11.63	11.5	8	14.82	86
mm	50	292	295	292	200	377	39
in	2 1/2	13	13.13	13	10	17.44	114.5
mm	65	330	333	330	250	443	52
in	3	14	14.13	14	11	18.31	194
mm	80	356	359	356	280	465	88
in	4	17	17.13	17	12	20.67	251
mm	100	432	435	432	300	525	114
in	6	22	22.13	22	18	26.46	628
mm	150	559	562	559	450	672	285
in	8	26	26.13	26	20	32.28	910
mm	200	660	664	660	500	820	413
in	10	31	31.13	31	26.75	38.7	1433
mm	250	787	791	787	680	983	650
in	12	33	33.13	33	29.5	44.1	1763
mm	300	838	841	838	750	1120	800
in	14	35	35.13	35	28	50.51	2513
mm	350	889	892	889	700	1283	1140
in	16	39	39.13	39	-	56.26	3747
mm	400	991	994	991	-	1429	1700
in	18	43	43.13	43	-	61.89	4999
mm	450	1092	1095	1092	-	1572	2268
in	20	47	165.38	47	-	69.17	6281.5
mm	500	1194	1200	1194	-	1757	2850
in	24	55	55.38	55	-	78.15	7714
mm	600	1397	1407	1397	-	1985	3500
in	30	65	65.5	65	-	97.44	-
mm	750	1651	1664	1651	-	2475	-
in	36	82	82.5	82	-	116.14	-
mm	900	2083	2096	2083	-	2950	-
in	40	-	-	-	-	-	-
mm	1000	-	-	-	-	-	-
in	42	-	-	-	-	-	-
mm	1050	-	-	-	-	-	-
in	48	-	-	-	-	-	-
mm	1200	-	-	-	-	-	-



KEY

NO.	PART NAME
L	LENGTH (END TO END)
L1	LENGTH (END TO END BUTTWELD ONLY)
L2	LENGTH (END TO END RTJ ONLY)
H	HEIGHT (CENTER OF BORE TO OF VALVE)
HW	USED WHEN HANDWHEEL (HW)

DESIGN STANDARDS

MANUFACTURING & TESTING STANDARDS	
Face to Face	ASME B16.10
Temperature/Pressure Rating	ASME B16.34
End Flanges	ASME B16.5
Inspection and Test	API 598
Butt Welding Ends	ASME B16.25
Base Design	API 600
NACE	MR0175



MATERIALS AND ENGINEERING DATA

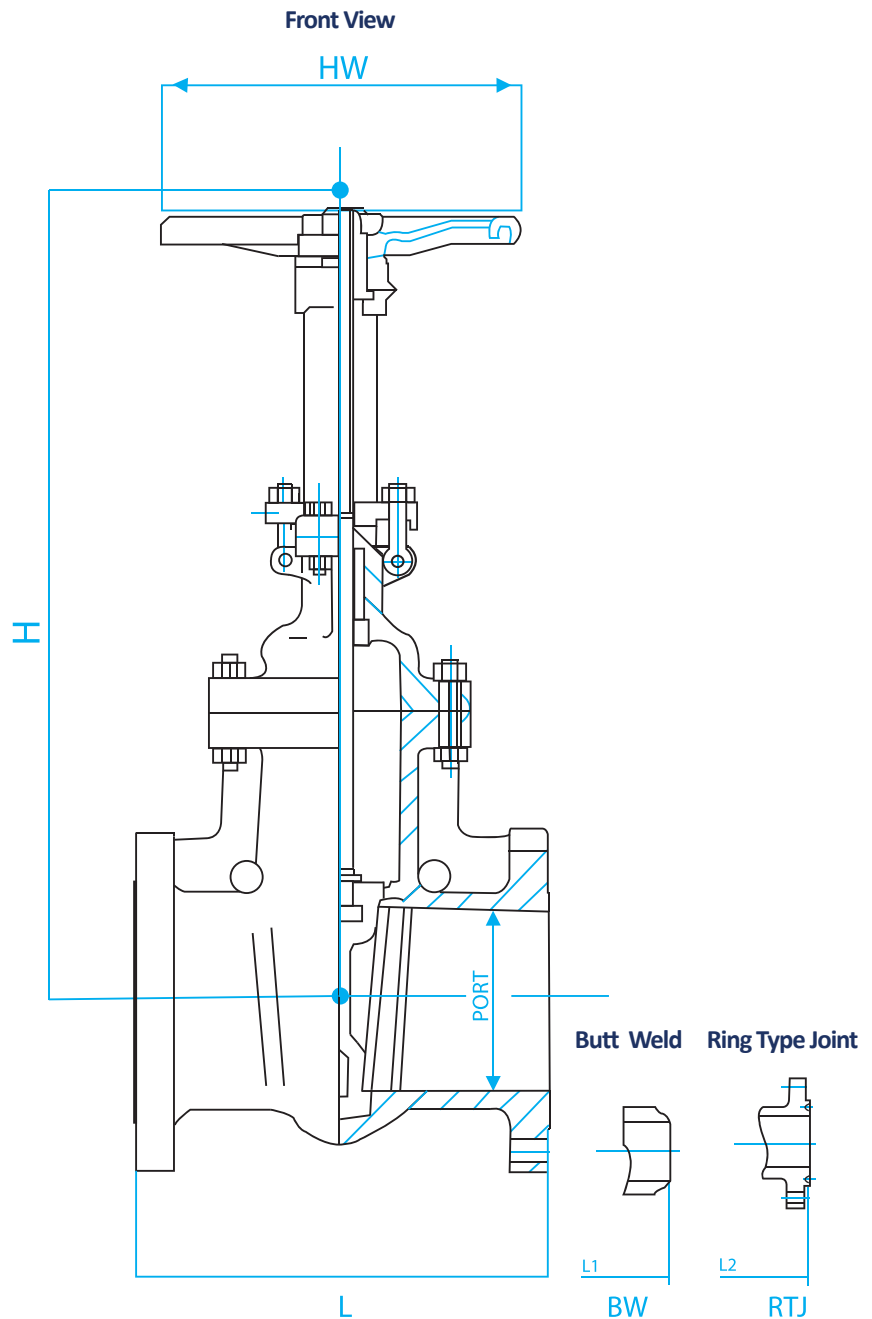
SERIES G

CLASS 900

Class 900							
Unit	Size	L	L1	L2	HW	H	Weight
in	2	14.5	14.63	14.5	12	17.52	159
mm	50	368	371	386	300	445	72
in	2 1/2	16.5	16.63	16.5	12	18.9	223
mm	65	419	422	419	300	480	101
in	3	15	15.13	15	14	20.2	287
mm	80	381	384	381	350	513	130
in	4	18	18.13	18	16	24.13	434
mm	100	457	460	457	400	613	197
in	6	24	24.13	24	24	32.83	890
mm	150	610	613	610	600	834	404
in	8	29	29.13	29	24	34.45	1433
mm	200	737	740	737	600	875	650
in	10	33	33.13	33	26	40.94	3033
mm	250	838	841	838	650	1040	1376
in	12	38	38.13	38	28	45.28	2594
mm	300	965	968	965	700	1150	1177
in	14	40.5	40.88	40.5	-	53.54	3306
mm	350	1029	1039	1029	-	1360	1500
in	16	44.5	44.88	44.5	-	59.84	4192
mm	400	1130	1140	1130	-	1520	1920

CLASS 1500

Class 1500							
Unit	Size	L	L1	L2	HW	H	Weight
in	2	14.5	14.63	14.5	12	18.19	187
mm	50	368	371	368	300	462	85
in	2 1/2	16.5	16.63	16.5	14	20.16	286.5
mm	65	419	422	419	350	512	130
in	3	18.5	18.63	18.5	16	21.65	375
mm	80	470	473	470	400	550	170
in	4	21.5	21.63	21.5	22	29.61	670
mm	100	546	549	546	550	752	304
in	6	27.75	28	27.75	24	44.1	1424
mm	150	705	711	705	600	1120	646
in	8	32.75	33.13	32.75	28	54.72	2424
mm	200	832	842	832	700	1390	1100
in	10	39	39.38	39	32	60	3526
mm	250	991	1001	991	800	1524	1600
in	12	44.5	45.13	44.5	-	72.83	4642
mm	300	1130	1146	1130	-	1850	2106
in	14	49.5	50.25	49.5	-	85.83	5951
mm	350	1257	1276	1257	-	2180	2700
in	16	54.5	55.38	54.5	-	87	7714
mm	400	1384	1406	1384	-	2210	3500



KEY

NO.	PART NAME
L	LENGTH (END TO END)
L1	LENGTH (END TO END BUTTWELDED ONLY)
L2	LENGTH (END TO END RTJ ONLY)
H	HEIGHT (CENTER OF BORE TO OF VALVE)
HW	USED WHEN HANDWHEEL (HW)

DESIGN STANDARDS

MANUFACTURING & TESTING STANDARDS	
Face to Face	ASME B16.10
Temperature/Pressure Rating	ASME B16.34
End Flanges	ASME B16.5
Inspection and Test	API 598
Butt Welding Ends	ASME B16.25
Base Design	API 600
NACE	MR0175



SERIES G

- ◆ Sizes 2 – 48" Cast Steel Gate Valve Design
- ◆ NACE MR0175 Compliant, API 600 Design
- ◆ B16.10, B16.5, B16.34 Compliant
- ◆ Bolted Bonnet Design, O S & Y
- ◆ Low Emissions Packing Design

Series	Class	Body	Trim	End Connection	Operator	Options	Size
G	15 - 150	1 - WCB	5 - Hardfaced & Stellite	1 - RF - Raised Face	GO - Gear Operator	X - Special	2" - 48"
Bolted Bonnet	30 - 300	2 - Alloy 20	8 - 410 & Hardfaced	2 - RTJ - Ring Type Joint			
PSG	60 - 600	3 - Stainless Steel	10 - 316 SS	3 - BW - Butt Weld Ends	HO - Handwheel Operator		
Pressure Seal Bonnet	90 - 900	X - Special	12 - 316 & Hardfaced				
	51 - 1500		X - Special				
	25 - 2500						

G	15	1	8	1			-02
Series	Class	Body	Trim	Ends	Operator	Options	Size

Description:

Class 150 Raised Face Flanged End, Gate Valve, A216-WCB Body, Trim 410 & Hardfaced (trim #8) O S & Y, Bolted Bonnet, Flexible Wedge, 125-250 AARH, Designed in accordance to API 600, B16.34, B16.10, B16.5 and NACE MR0175, Graphite Packing and Seals.

PLEASE NOTE: There may be some performance variations between the GVC Series G and other manufacturer's comparable body designs. To ensure the longevity of performance, please provide specific information relevant to the requirements needed for each application process.



8535 Jackrabbit Rd., Ste i
Houston, TX 77095
866.965.8GVC (482)
281.463.1474 office
281.463.7735 fax
www.GVCINTL.com

Please contact our sales representatives to receive more information regarding your systems particular needs.

Due to the ongoing development of our product line, Global Valve & Controls reserves the right to change the dimensions contained in the leaflet, as required.