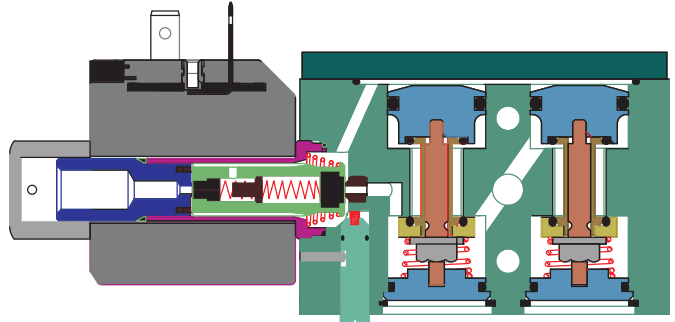


5/2, 3/2 CONVERTIBLE POPPET TYPE NAMUR SOLENOID V ALVE

TYPE	PRESSURE	TYPE	PRESSURE	TYPE	PRESSURE		
51424	1-10 bar	51424IS	2-8 bar			MONOSATBLE BI FUNCTIONAL	
51424LW	1-10 bar						



FEA TURES

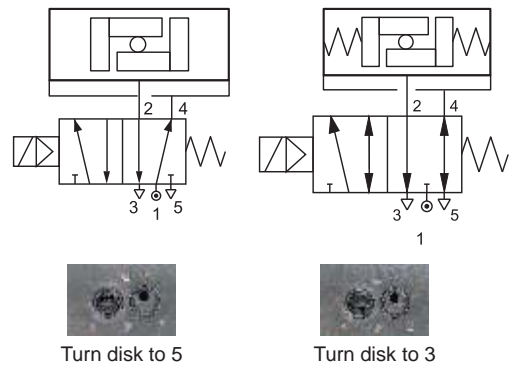
Idealy suited for dusty out door application.
 Poppet design for faster operation.
 Dust cap fitted on exhaust ports.

Weight in Kg	Alluminium	Brass	SS
	0.550	1.310	1.210

SPECIFICATIONS

Valve Type	Port Connection									Op. Mode	Min. Op. Pr. (kg/cm ²)	Orifice (mm)				IS CKT	Power (Watt)						
	INLET	OUTLET	OUTLET	EXHAUST	EXHAUST	P. EXH.	1/4	3/8	1/2			6	11	15	20		AC	DC					
																			kv (l / min.), DP = 1 kg/cm ²				Max. Op. Pr. (kg/cm ²)
51424	1	2	4	3	5	6	•				1	10				✓	6	8					
51424LW	1	2	4	3	5	6	•				1	10				✓	2	2					
51424IS	1	2	4	3	5	6	•				2	8						0.4					

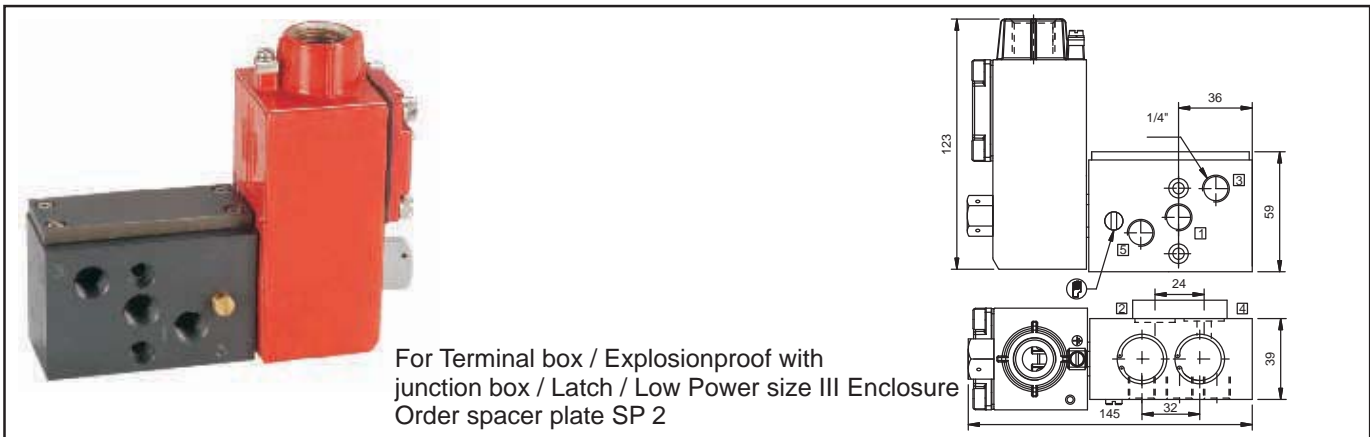
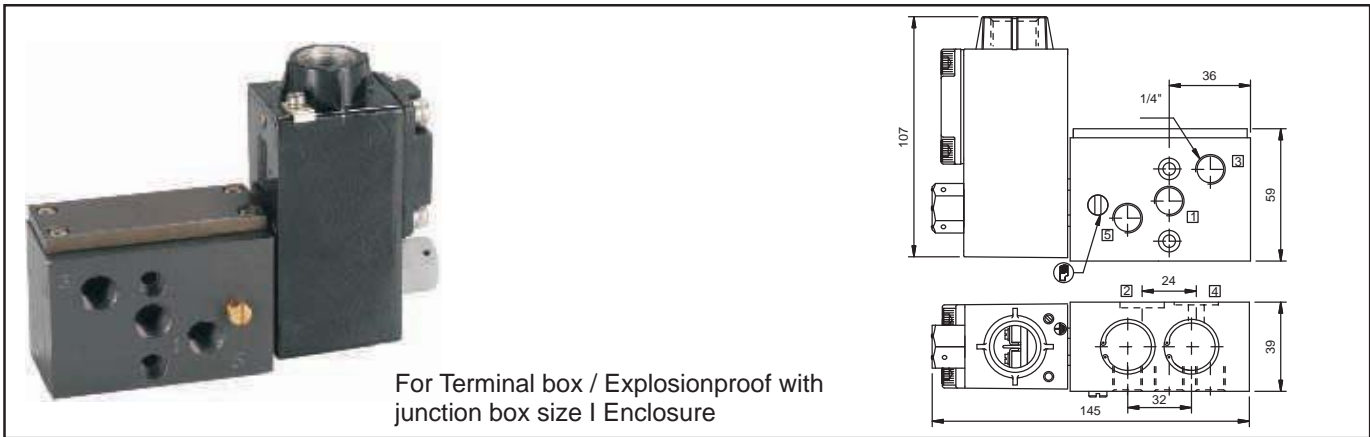
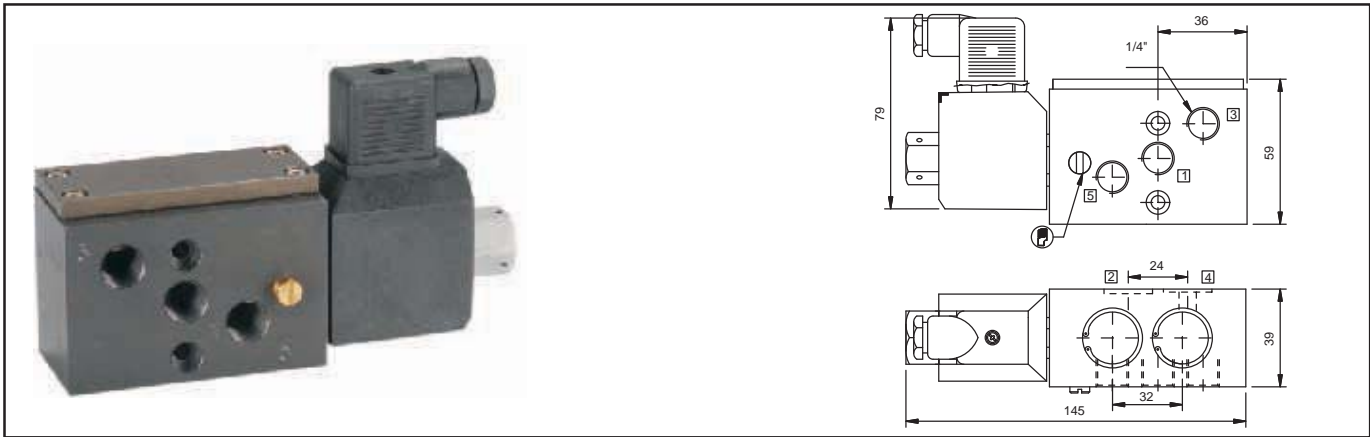
APPLICATION



OPTION

Body	Aluminium		Brass		SS316		Aluminium	
Internal	Aluminium, Brass, SS316	*	Brass, SS316	B2	SS316	B5	SS316	B1
Manual Override	Nil	MO	Push and Turn	*	Push	M8		
Seals	NBR	*	EPDM	S1	Viton	S2		HNBR S10
Port Connection	SIZE	1/4"						
	BSP	2G						
	NPT	2R						
Special Version/Suffix	T6, LC, PC, NP, CO, LW and SS							
Option Available of Solenoid Construction	WEATHERPROOF SOLENOID				EXPLOSIONPROOF SOLENOID			
	Flying Lead with Cable Entry	FL with Cable Entry	Terminal Box	Multi Pin	Plug in	Flying Lead with Cable Entry	Junction Box Exd	IS Coil with Circuit EXia

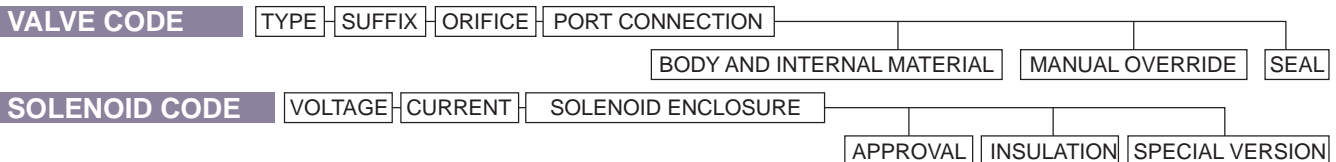
DIMENSIONS



OUTLET PORT CONFIGURATION AS PER NAMUR II

ORDERING OPTION

VALVE CODE + SOLENOID CODE



X DO NOT SPECIFY CODE IF OPTED

Refer to page 16 for option of Body and internals material, manual override and seals.

Refer to page 38 and 39 for options of voltage, current, solenoid enclosure, approval, insulation and special version.