

Cast Globe Valve
WCB ■ CF8M ■ Various other Alloys
ANSI 150-300-600-900-1500-2500 (2'-24")



SERIES GL



**GLOBAL VALVE
& CONTROLS**



Providing Hundreds of Products. Supporting Thousands of Clients. Controlling Millions of Gallons.

DEPEND ON US. WE CAN HANDLE THE PRESSURE.



SERIES G



GF-3



CKF-2



SERIES CK



GLF-4



SERIES GL



NVG6000



NV10000



GLOBAL VALVE
& CONTROLS

Control > Quality
Flow >



20-RP



20-FP



SERIES SBG



SERIES EXPG



SERIES FS



BV2000



CFS



SERIES 2T/3T



BV3600



BV6000

BV3705



SERIES 30



SERIES 790



SERIES 10



SERIES 800



SERIES FSD-61



YFS w/ MCB



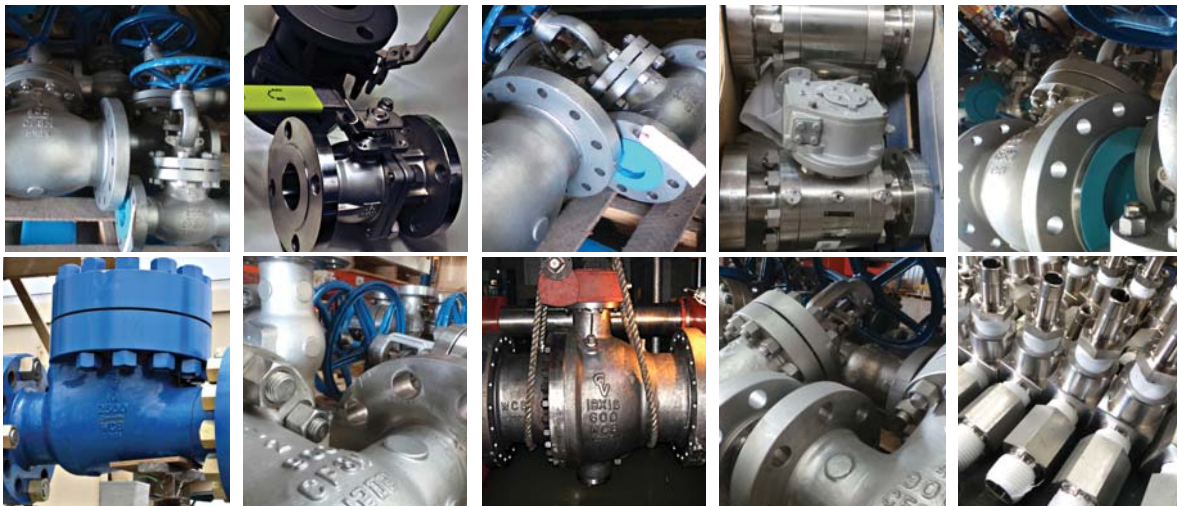
FS525

Discover the difference!



Series GL


- ◆ Sizes 2" - 24"
- ◆ ANSI Class 150-2500
- ◆ Cast Steel **Globe**
- ◆ BS 1873 design
- ◆ Bolted Bonnet Design, O S & Y
- ◆ WCB, CF8M, Alloy 20 and Various Other Alloys available
- ◆ Low Emissions Packing Design
- ◆ NACE MR0175 Compliant
- ◆ B16.10
- ◆ B16.5
- ◆ B16.34
- ◆ Butt Weld, Raised Face, and Ring Type Joint Ends (RTJ)
- ◆ **Pressure Seal ANSI 1500 & 2500 Optional**
- ◆ **Cryogenic Stem Option**



GLOBAL Valve & Controls®  is an ISO 9001 certified and API 6D, Q1 licensed valve manufacturer of Domestic and Non Domestic products. Offering Ball, Globe, Gate, Expanding Gate, Slab Gate, Check, and Needle Valves; Actuators and Automation Accessories.

 accommodates & services the Upstream, Midstream & Down-stream market segments of the oil/gas industry, with a primary focus on Natural Gas Transport and Storage Projects, as well as, the Petrochemical, Agricultural, Mining, Water/ Waste Management, and Aerospace Industrial Sectors.

GLOBAL Valve & Controls® has the right valve for the right application, ranging from ANSI 150 through 2500, sizes 1/4 to 48", in Stainless Steel, Carbon Steel, Alloy 20, Monel, Duplex, and other various exotic body materials.

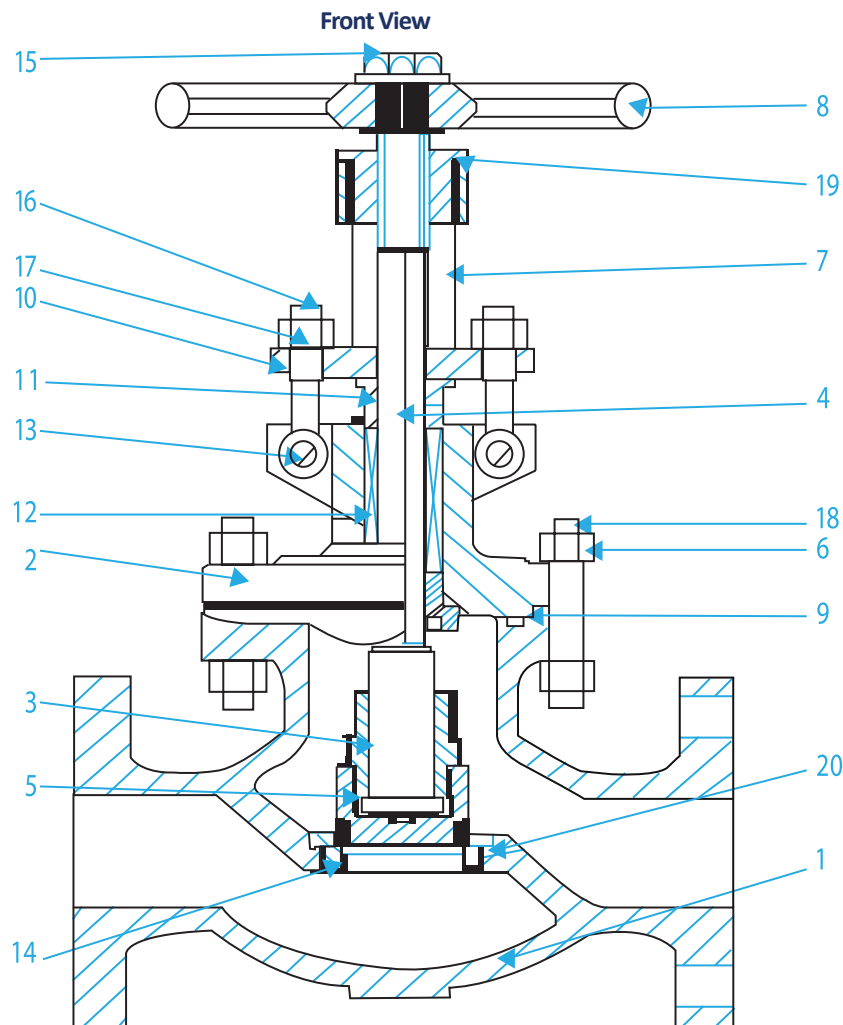
 also carries fully automated valve packages, fugitive emission solutions, control packages, cryogenic valves, as well as, various valve coating solutions. Special Ordering is available!

GLOBAL Valve & Controls® continues to make strides in elevating our company beyond industry standards, by being consistent in providing products that are of superior quality and performance, dedicating ourselves to quality assurance, and being immediately responsive to our customer needs. We look forward to the opportunity to supply your valve needs!

Sincerely



Troy Richard
CEO at GLOBAL Valve
& Controls



BILL OF MATERIALS

| NO. | PARTS NAME | MATERIAL | | | | |
|-----|---------------|------------------------------------|--------------|---------|------------|--------------|
| 1 | BODY | A216 - WCB | A217 - WC6 | | A352 - LCB | A351-CF8M |
| 2 | BONNET | A216 - WCB | A217 - WC6 | | A352 - LCB | A351-CF8M |
| 3 | DISC/PLUG | API TRIM # 5, 8, 10 and 12 | | | | |
| 4 | STEM | API TRIM # 5, 8, 10 and 12 | | | | |
| 5 | DISC NUT | API TRIM # 5, 8, 10 and 12 | | | | |
| 6 | BONNET NUTS | A194-2HM | A194-7 | A194-2H | A194-8M | A194-8 |
| 7 | YOKE | A216-WCB | A352 - LCB | | A217-WC6 | A351-CF8M |
| 8 | HAND WHEEL | A47 / A536 | | | | |
| 9 | GASKET | 304 SPIRALWOUND W/ GRAPHOIL FILLER | | | | |
| 10 | GLAND FLANGE | A216-WCB | A352 - LCB | | A217-WC6 | A351-CF8M |
| 11 | GLAND | A276 - 410 | | | | |
| 12 | GLAND PACKING | GRAPHITE | | | | |
| 13 | EYE BOLT PINS | A276 - 410 | | | | |
| 14 | WASHER | A36 + ZN PLATE | | | | |
| 15 | WHEEL NUT | CARBON STEEL | | | | |
| 16 | EYE BOLTS | A193 - B7 | A193 - B8M | | A193 - B7M | A320-L7 |
| 17 | EYE BOLT NUTS | A194-2HM | A194-7 | A194-2H | A194-8M | A194-8 |
| 18 | BONNET BOLTS | A193 - B7 | A193 - B8M | | A193 - B7M | A320-L7 |
| 19 | YOKE BUSHING | BRASS | CARBON STEEL | | | A439 TYPE D2 |
| 20 | SEAT RING | API TRIM # 5, 8, 10 and 12 | | | | |

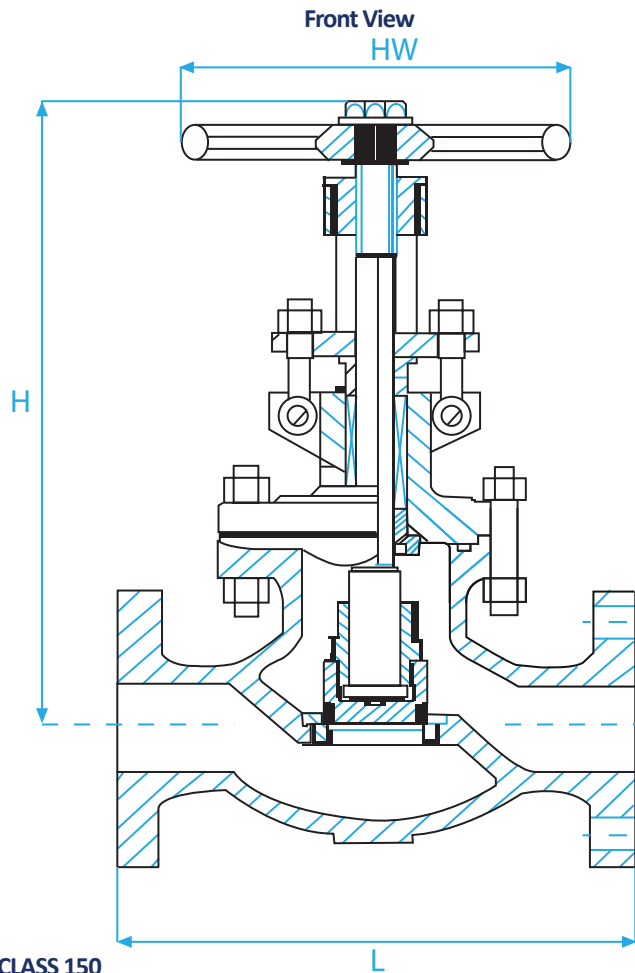
DESIGN STANDARDS

| MANUFACTURING & TESTING STANDARDS | |
|-----------------------------------|-------------|
| Face to Face | ASME B16.10 |
| Temperature/Pressure Rating | ASME B16.34 |
| End Flanges | ASME B16.5 |
| Inspection and Test | API 598 |
| Butt Welding Ends | ASME B16.25 |
| Base Design | BS 1873 |
| NACE | MR0175 |



ENGINEERING DATA

SERIES GL



DESIGN STANDARDS

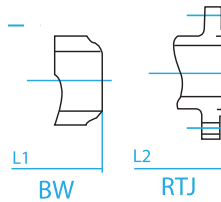
MANUFACTURING & TESTING STANDARDS

| | |
|-----------------------------|-------------|
| Face to Face | ASME B16.10 |
| Temperature/Pressure Rating | ASME B16.34 |
| End Flanges | ASME B16.5 |
| Inspection and Test | API 598 |
| Butt Welding Ends | ASME B16.25 |
| Base Design | BS 1873 |
| NACE | MR0175 |

Key

| NO. | PART MEANING |
|-----|---|
| L | LENGTH (END TO END) |
| L1 | LENGTH (END TO END BUTTWELD ONLY) |
| L2 | LENGTH (END TO END RTJ ONLY) |
| H | HEIGHT (CENTER OF BORE TO TOP OF VALVE) |
| HW | HANDWHEEL DIAMETER |

Butt Weld Ring Type Joint

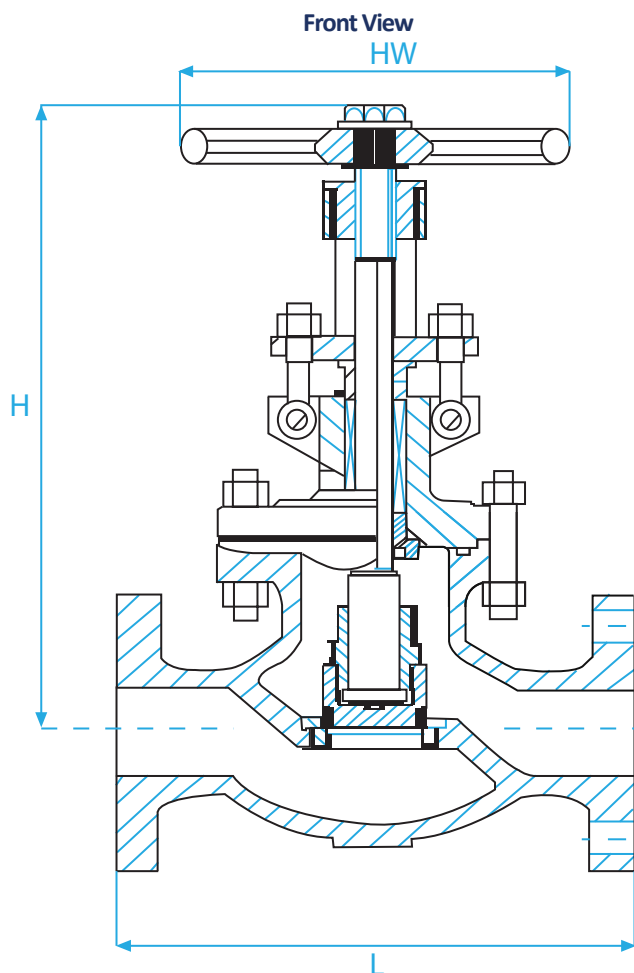


CLASS 150

| | | Class 150 | | | | | |
|------|-------|-----------|------|------|------|-------|--------|
| Unit | Size | L | L1 | L2 | HW | H | Weight |
| in | 2 | 8 | 8.5 | 8 | 8.5 | 13.78 | 46 |
| mm | 50 | 203 | 216 | 203 | 220 | 350 | 21 |
| in | 2 1/2 | 8.5 | 9 | 8.5 | 10 | 14.25 | 64 |
| mm | 65 | 216 | 229 | 216 | 250 | 362 | 29 |
| in | 3 | 9.5 | 10 | 9.5 | 11 | 15.16 | 75 |
| mm | 80 | 241 | 254 | 241 | 280 | 385 | 34 |
| in | 4 | 11.5 | 12 | 11.5 | 12.5 | 19.29 | 119 |
| mm | 100 | 292 | 305 | 292 | 320 | 490 | 54 |
| in | 6 | 16 | 16.5 | 16 | 16 | 21.14 | 205 |
| mm | 150 | 406 | 419 | 406 | 400 | 537 | 93 |
| in | 8 | 19.5 | 20 | 19.5 | 18 | 27.83 | 408 |
| mm | 200 | 495 | 508 | 495 | 450 | 707 | 185 |
| in | 10 | 24.5 | 25 | 24.5 | 22 | 31.02 | 591 |
| mm | 250 | 622 | 635 | 622 | 560 | 788 | 268 |
| in | 12 | 27.5 | 28 | 27.5 | 23 | 32.28 | 882 |
| mm | 300 | 698 | 711 | 698 | 580 | 820 | 400 |
| in | 14 | 31 | 31.5 | 31 | - | 35.35 | 1433 |
| mm | 350 | 787 | 800 | 787 | - | 898 | 650 |
| in | 16 | 36 | 36.5 | 36 | - | 36.61 | 2453 |
| mm | 400 | 914 | 927 | 914 | - | 930 | 1113 |
| in | 18 | 38.5 | 39 | 38.5 | - | 38.58 | - |
| mm | 450 | 978 | 991 | 978 | - | 980 | - |
| in | 20 | 38.5 | 39 | 38.5 | - | 40.47 | - |
| mm | 500 | 978 | 991 | 978 | - | 1028 | - |
| in | 24 | 51 | 51.5 | 51 | - | 44.65 | - |
| mm | 600 | 1295 | 1308 | 1295 | - | 1134 | - |

CLASS 300

| | | Class 300 | | | | | |
|------|-------|-----------|-------|------|------|-------|--------|
| Unit | Size | L | L1 | L2 | HW | H | Weight |
| in | 2 | 10.5 | 11.13 | 10.5 | 8.5 | 13.58 | 62 |
| mm | 50 | 267 | 283 | 267 | 220 | 345 | 28 |
| in | 2 1/2 | 11.5 | 12.13 | 11.5 | 10 | 14.84 | 79 |
| mm | 65 | 292 | 308 | 292 | 250 | 377 | 36 |
| in | 3 | 12.5 | 13.13 | 12.5 | 11 | 15.94 | 110 |
| mm | 80 | 318 | 334 | 318 | 280 | 405 | 50 |
| in | 4 | 14 | 14.63 | 14 | 12.5 | 18.43 | 165 |
| mm | 100 | 356 | 372 | 356 | 320 | 468 | 75 |
| in | 6 | 17.5 | 18.13 | 17.5 | 18 | 27.87 | 441 |
| mm | 150 | 445 | 461 | 445 | 450 | 708 | 200 |
| in | 8 | 22 | 22.63 | 22 | 20 | 30.59 | 633 |
| mm | 200 | 559 | 575 | 559 | 500 | 777 | 287 |
| in | 10 | 24.5 | 25.13 | 24.5 | 22 | 36.81 | 1124 |
| mm | 250 | 622 | 638 | 622 | 560 | 935 | 510 |
| in | 12 | 28 | 28.63 | 28 | 24 | 37.6 | 1587 |
| mm | 300 | 711 | 727 | 711 | 600 | 955 | 720 |
| in | 14 | 33 | 33.63 | 33 | - | 37.83 | - |
| mm | 350 | 838 | 854 | 838 | - | 961 | - |
| in | 16 | 34 | 34.63 | 34 | - | 39.76 | - |
| mm | 400 | 864 | 880 | 864 | - | 1010 | - |



DESIGN STANDARDS

| MANUFACTURING & TESTING STANDARDS | |
|-----------------------------------|-------------|
| Face to Face | ASME B16.10 |
| Temperature/Pressure Rating | ASME B16.34 |
| End Flanges | ASME B16.5 |
| Inspection and Test | API 598 |
| Butt Welding Ends | ASME B16.25 |
| Base Design | BS 1873 |
| NACE | MR0175 |

Key

| NO. | PART MEANING |
|-----|---|
| L | LENGTH (END TO END) |
| L1 | LENGTH (END TO END BUTTWELD ONLY) |
| L2 | LENGTH (END TO END RTJ ONLY) |
| H | HEIGHT (CENTER OF BORE TO TOP OF VALVE) |
| HW | HANDWHEEL DIAMETER |

CLASS 600

| Class 600 | | | | | | | |
|-----------|-------|------|-------|------|------|-------|--------|
| Unit | Size | L | L1 | L2 | HW | H | Weight |
| in | 2 | 11.5 | 11.63 | 11.5 | 11 | 15.16 | 71 |
| mm | 50 | 292 | 295 | 292 | 280 | 385 | 32 |
| in | 2 1/2 | 13 | 13.13 | 13 | 11 | 16.93 | 99 |
| mm | 65 | 330 | 333 | 330 | 280 | 430 | 45 |
| in | 3 | 14 | 14.13 | 14 | 12.5 | 18.7 | 137 |
| mm | 80 | 356 | 359 | 356 | 320 | 475 | 62 |
| in | 4 | 17 | 17.13 | 17 | 16 | 26.97 | 306 |
| mm | 100 | 432 | 435 | 432 | 400 | 685 | 139 |
| in | 6 | 22 | 22.13 | 22 | 22 | 35.47 | 754 |
| mm | 150 | 559 | 562 | 559 | 550 | 901 | 342 |
| in | 8 | 26 | 26.13 | 26 | 24 | 35.94 | 1065 |
| mm | 200 | 660 | 663 | 660 | 600 | 913 | 483 |
| in | 10 | 31 | 31.13 | 31 | 26 | 41.73 | 1918 |
| mm | 250 | 787 | 790 | 787 | 650 | 1060 | 870 |
| in | 12 | 33 | 33.13 | 33 | 30 | 48.31 | 2352 |
| mm | 300 | 838 | 841 | 838 | 760 | 1227 | 1067 |

CLASS 900

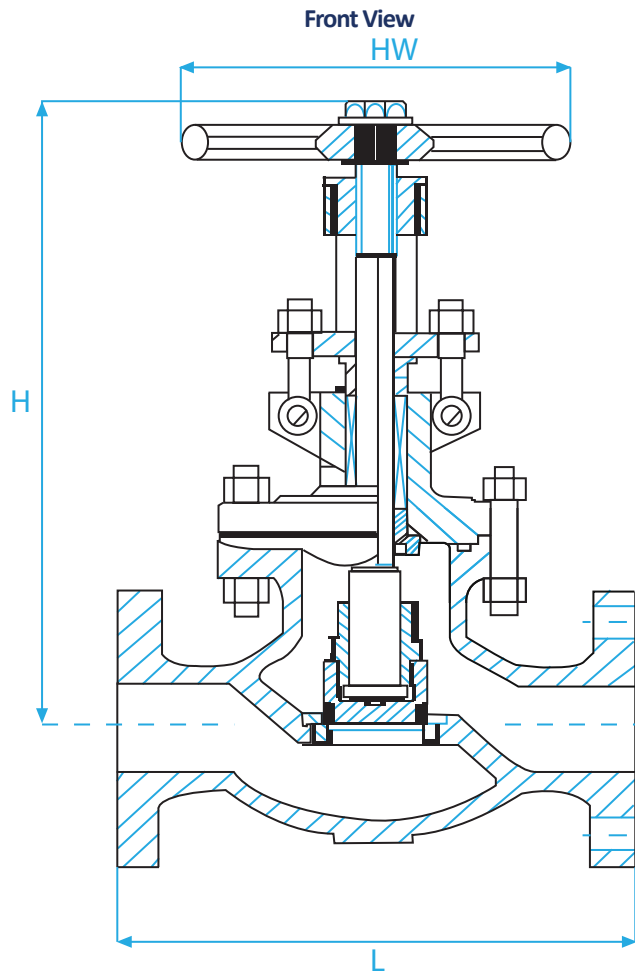
| Class 900 | | | | | | | |
|-----------|-------|------|-------|------|------|-------|--------|
| Unit | Size | L | L1 | L2 | HW | H | Weight |
| in | 2 | 14.5 | 14.63 | 14.5 | 12.5 | 16.93 | 128 |
| mm | 50 | 368 | 371 | 368 | 320 | 430 | 58 |
| in | 2 1/2 | 16.5 | 16.63 | 16.5 | 12.5 | 22.83 | 203 |
| mm | 65 | 419 | 422 | 419 | 320 | 580 | 92 |
| in | 3 | 15 | 15.13 | 15 | 14 | 26.57 | 317 |
| mm | 80 | 381 | 384 | 381 | 350 | 675 | 144 |
| in | 4 | 18 | 18.13 | 18 | 16 | 30.71 | 496 |
| mm | 100 | 457 | 460 | 457 | 500 | 780 | 225 |
| in | 6 | 24 | 24.13 | 24 | 26 | 34.25 | 1106 |
| mm | 150 | 610 | 613 | 610 | 650 | 870 | 502 |
| in | 8 | 29 | 29.13 | 29 | 26 | 38.58 | 1587 |
| mm | 200 | 737 | 740 | 737 | 650 | 980 | 720 |
| in | 10 | 33 | 33.13 | 33 | - | 39.76 | - |
| mm | 250 | 838 | 841 | 838 | - | 1010 | - |
| in | 12 | 38 | 38.13 | 38 | - | 51.18 | - |
| mm | 300 | 965 | 968 | 965 | - | 1300 | - |

* Please contact GVC for additional sizes



ENGINEERING DATA

SERIES GL



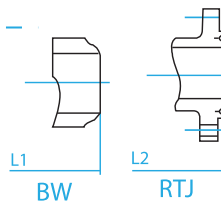
DESIGN STANDARDS

| MANUFACTURING & TESTING STANDARDS | |
|-----------------------------------|-------------|
| Face to Face | ASME B16.10 |
| Temperature/Pressure Rating | ASME B16.34 |
| End Flanges | ASME B16.5 |
| Inspection and Test | API 598 |
| Butt Welding Ends | ASME B16.25 |
| Base Design | BS 1873 |
| NACE | MR0175 |

Key

| NO. | PART MEANING |
|-----|---|
| L | LENGTH (END TO END) |
| L1 | LENGTH (END TO END BUTTWELD ONLY) |
| L2 | LENGTH (END TO END RTJ ONLY) |
| H | HEIGHT (CENTER OF BORE TO TOP OF VALVE) |
| HW | HANDWHEEL DIAMETER |

Butt Weld Ring Type Joint



CLASS 1500

| Class 1500 | | | | | | | |
|------------|-------|-------|-------|-------|------|-------|--------|
| Unit | Size | L | L1 | L2 | HW | H | Weight |
| in | 2 | 14.5 | 14.63 | 14.5 | 12.5 | 13.93 | 145 |
| mm | 50 | 368 | 371 | 368 | 320 | 430 | 66 |
| in | 2 1/2 | 16.5 | 16.63 | 16.5 | 16 | 19.69 | 254 |
| mm | 65 | 419 | 422 | 419 | 400 | 500 | 115 |
| in | 3 | 18.5 | 18.63 | 18.5 | 18 | 29.52 | 414 |
| mm | 80 | 470 | 473 | 470 | 450 | 750 | 188 |
| in | 4 | 21.5 | 21.63 | 21.5 | 24 | 32.28 | 644 |
| mm | 100 | 546 | 549 | 546 | 600 | 820 | 292 |
| in | 6 | 27.75 | 28 | 27.75 | 28 | 35.83 | 1367 |
| mm | 150 | 705 | 711 | 705 | 700 | 910 | 620 |
| in | 8 | 32.75 | 33.13 | 32.75 | 32 | 39.96 | 1781 |
| mm | 200 | 832 | 842 | 832 | 800 | 1015 | 808 |
| in | 10 | 39 | 39.38 | 39 | - | 40.75 | - |
| mm | 250 | 991 | 1001 | 991 | - | 1035 | - |

* Please contact GVC for additional sizes



SERIES GL

- ◆ Sizes 2 – 24" Cast Steel Globe Valve Design
- ◆ NACE MR0175 Compliant, Designed to BS 1873
- ◆ B16.10, B16.5, B16.34 Compliant
- ◆ Bolted Bonnet Design, O S & Y
- ◆ Low Emissions Packing Design

| Series | Class | Body | Trim | Ends | Operator | Options | Size |
|------------------------------|-----------|--------------------|--------------------------|---------------------------|-------------------------|-------------|----------|
| GL Bolted Bonnet | 15 - 150 | 1 - WCB | 5 - Hardfaced & Stellite | 1 - RF - Raised Face | GO - Gear Operator | X - Special | 2" - 24" |
| | 30 - 300 | 2- Alloy 20 | 8 - 410 & Hardfaced | 2 - RTJ - Ring Type Joint | | | |
| PSGL Pressure Seal Bonnet | 60 - 600 | 3- Stainless Steel | 10 - 316 SS | 3 - BW - Butt Weld Ends | HO - Handwheel Operator | | |
| | 90 - 900 | X- Special | 12 - 316 & Hardfaced | | | | |
| | 51 - 1500 | | X - Special | | | | |
| | 25 - 2500 | | | | | | |

| | | | | | | | |
|-----------|-----------|----------|----------|----------|----------|---------|------------|
| GL | 15 | 1 | 8 | 1 | | | -02 |
| Series | Class | Body | Trim | Ends | Operator | Options | Size |

Description:

2" ANSI 150 Raised Face Flanged End Globe Valve, A216-WCB Body, API Trim 8, O S & Y, Bolted Bonnet, 125-250 AARH, Handwheel Operated. Designed to BS 1873, B16.10, B16.5 and NACE MR0175

PLEASE NOTE: There may be some performance variations between the GVC Series GL and other manufacturer's comparable body designs. To ensure the longevity of performance, please provide specific information relevant to the requirements needed for each application process.



8535 Jackrabbit Rd., Ste i
Houston, TX 77095
866.965.8GVC (482)
281.463.1474 office
281.463.7735 fax
www.GVCINTL.com

Please contact our sales representatives to receive more information regarding your systems particular needs.

Due to the ongoing development of our product line, Global Valve & Controls reserves the right to change the dimensions contained in the leaflet, as required.