

## Three Piece Full Port Ball Valve

WCB ■ CF8M ■ Alloy 20 ■ Hastelloy C ■ Various other Alloys

2000 PSI (1/4" - 1")

1500 PSI (1 1/4" - 2")



**GLOBAL VALVE  
& CONTROLS**



# SERIES FS525

Providing Hundreds of Products. Supporting Thousands of Clients. Controlling Millions of Gallons.

**DEPEND ON US. WE CAN HANDLE THE PRESSURE.**





SERIES G



GF-3



CKF-2



SERIES CK



GLF-4



SERIES GL



NVG6000



NV10000



GLOBAL VALVE  
& CONTROLS

Control > Quality  
Flow >



20-RP



20-FP



SERIES SBG



SERIES EXPG



SERIES FS



BV2000



CFS



SERIES 2T/3T



BV3600



BV6000

BV3705



SERIES 30



SERIES 790



SERIES 10



SERIES 800



SERIES FSD-61



YFS w/ MCB



FS525

# Discover the difference!



## Series FS525


- ◆ Sizes 1/4" - 1" 2000 W.O.G. (PSI)
- ◆ Sizes 1 1/4" - 2" 1500 W.O.G. (PSI)
- ◆ 3-Piece High Performance Body Design, Full Port
- ◆ Threaded End Connections to ASME B1.20.1 (NPT)
- ◆ Socket Weld Connections to ASME B16.11
- ◆ Carbon or Stainless Steel
- ◆ Wide variety of Exotic Alloys
- ◆ NACE MR0175 Compliant
- ◆ Fire Tested according to API 607 Standards
- ◆ Full Encapsulated Body Seals
- ◆ Seat Options: NOVA, PEEK, TFE, Delrin, RTFE and UMPHWE (TFM Standard)
- ◆ Self-Cleaning, Leak Tight Slotted Seat Design
- ◆ ISO 5211 Actuator Mounting Pad
- ◆ *Cryogenic Stem Option*



GLOBAL Valve & Controls®  is an ISO 9001 certified and API 6D, Q1 licensed valve manufacturer of Domestic and Non Domestic products. Offering Ball, Globe, Gate, Expanding Gate, Slab Gate, Check, and Needle Valves; Actuators and Automation Accessories.

 accommodates & services the Upstream, Midstream & Down-stream market segments of the oil/gas industry, with a primary focus on Natural Gas Transport and Storage Projects, as well as, the Petrochemical, Agricultural, Mining, Water/ Waste Management, and Aerospace Industrial Sectors.

GLOBAL Valve & Controls® has the right valve for the right application, ranging from ANSI 150 through 2500, sizes 1/4 to 48", in Stainless Steel, Carbon Steel, Alloy 20, Monel, Duplex, and other various exotic body materials.

 also carries fully automated valve packages, fugitive emission solutions, control packages, cryogenic valves, as well as, various valve coating solutions. Special Ordering is available!

GLOBAL Valve & Controls® continues to make strides in elevating our company beyond industry standards, by being consistent in providing products that are of superior quality and performance, dedicating ourselves to quality assurance, and being immediately responsive to our customer needs. We look forward to the opportunity to supply your valve needs!

Sincerely



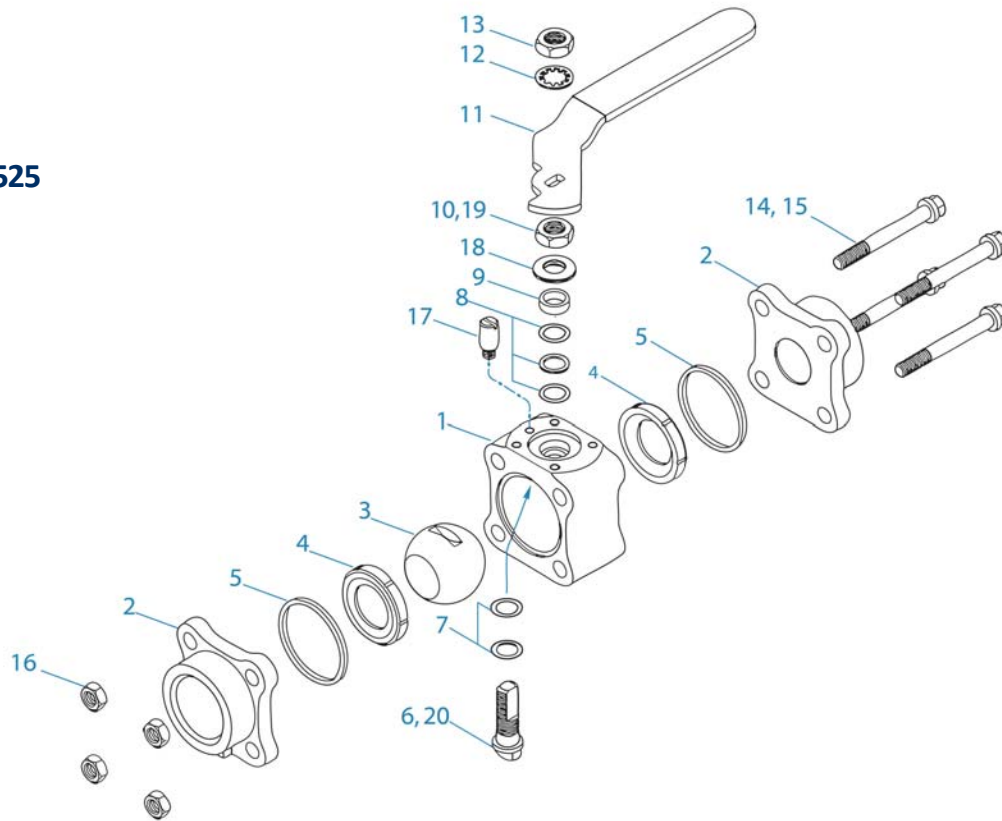
**Troy Richard**  
CEO at GLOBAL Valve  
& Controls



# MATERIALS OF CONSTRUCTION

## SERIES FS525

FS525



### Bill of Materials

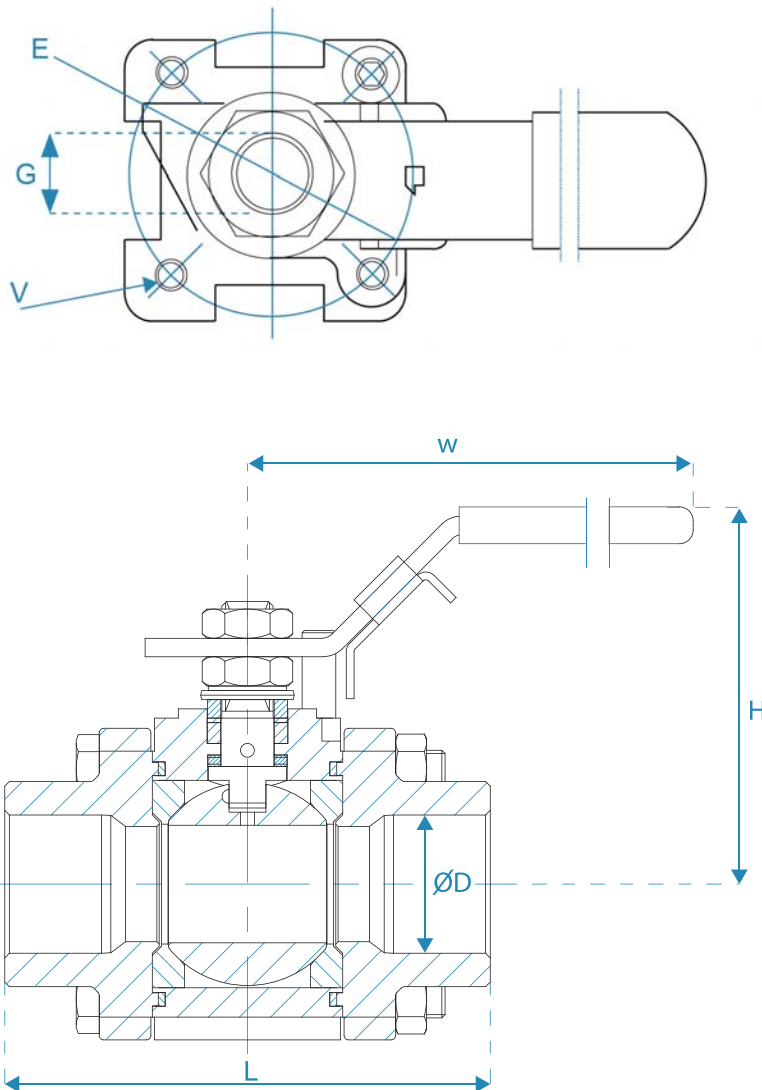
NO.	PART NAME	MATERIAL
1	Body	Carbon Steel - ASTM A216 WCB 316SS - ASTM A351 CF8M Alloy 20 - ASTM A351 CN7M Hastelloy C - ASTM A494 Cw12MW X - Special
2	Valve End (threaded shown)	Carbon Steel - ASTM A216 WCB 316SS - ASTM A351 CF8M Alloy 20 - ASTM A351 CN7M Hastelloy C - ASTM A494 Cw12MW X - Special
3	Ball	316SS, Monel, Alloy 20, Hastelloy C, X - Special
4	Seat	TFE, Reinforced TFE, NOVA*, Derlin, UHMWPE, PEEK, TFM**
5	Body Gasket	Grafoil, EPDM
6	Stem	316SS, Monel, Alloy 20, Hastelloy C, X - Special
7	Thrust Bearing	50% SS + 50% RTFE
8	Stem Packing	Grafoil
9	Packing Gland	304 Stainless Steel
10	Stem Nut	304 Stainless Steel
11	Handle	304 Stainless Steel
12	Handle Washer	304 Stainless Steel
13	Handle Nut	304 Stainless Steel
14	Body Bolts	304 Stainless Steel, B7, Alloy 20, B7M, B8M
15	Body Washers	304 Stainless Steel
16	Body Nuts	304 Stainless Steel, 2H, Alloy 20, 2HM, 8M
17	Stop Screw	304 Stainless Steel
18	Belleville Washer	301 Stainless Steel
19	Stop Washer	304 Stainless Steel
20	Anti-Static Device	316 Stainless Steel





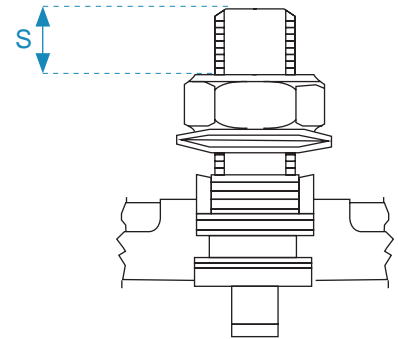
# MATERIALS AND ENGINEERING DATA

## SERIES FS525

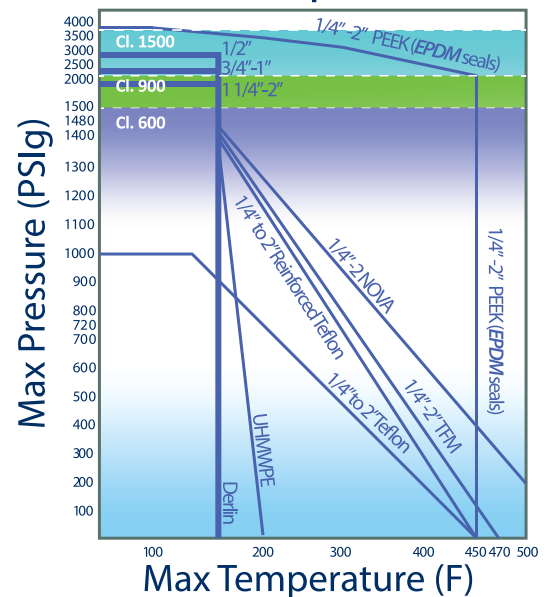


Dimension Chart

Unit	Size	ØD	L	H	W	V	G	E	S
in	1/4"	.417	2.755	2.992	5.314	M5	.248	1.653	.41
mm	6.3	10.6	70.0	76.0	135.0	M5	6.3	42.0	10.41
in	3/8"	.500	2.755	2.992	5.314	M5	.248	1.653	.41
mm	9.5	12.7	70.0	76.0	135.0	M5	6.3	42.0	10.41
in	1/2"	.590	2.952	3.267	5.314	M5	.248	1.653	.46
mm	12.7	15.0	75.0	83.0	135.0	M5	6.3	42.0	11.68
in	3/4"	.787	3.149	3.267	5.314	M5	.248	1.653	.46
mm	19	20.0	80.0	83.0	135.0	M5	6.3	42.0	11.68
in	1"	.984	3.543	3.858	6.692	M6	.354	1.968	.49
mm	25.4	25.0	90.0	98.0	170.0	M6	9.0	50.0	12.44
in	1-1/4"	1.25	4.330	4.055	6.692	M6	.354	1.968	.49
mm	31.7	32.0	110.0	103.0	170.0	M6	9.0	50.0	12.44
in	1-1/2"	1.299	4.724	4.330	7.874	M8	.377	2.755	.59
mm	38.1	33.0	120.0	110.0	200.0	M8	9.6	70.0	14.98
in	2"	1.968	5.511	4.685	7.874	M8	.377	2.755	.59
mm	50.8	50.0	140.0	119.0	200.0	M8	9.6	70.0	14.98



Pressure Temperature Chart



Design Standards

MANUFACTURING & TESTING STANDARDS	
Base Design	ASME B16.34, API 608
Inspection and Test	API 598
NACE	MR0175
Firesafe	API 607 6th edition
Thread Ends	ASME B 1.20.1
Socket Weld Ends	ASME B16.11
End Flanges	ASME B16.5

Size	Estimated CV Factor	Estimated Weight
1/4"	13	1.80
3/8"	24	1.80
1/2"	35	2.05
3/4"	63	4
1"	93	6
1-1/4"	149	12
1-1/2"	223	12
2"	478	19



# HOW TO ORDER

## SERIES FS525



## SERIES FS525

- ◆ 1/4" – 1" 2000 (PSI) Rated, 1 1/4"-2" 1500 (PSI) Rated
- ◆ 3-Piece High Performance Design
- ◆ Full Port
- ◆ NACE MR0175 Compliant, Fire-Safe Design, Fire-Tested to API 607
- ◆ Interchangeable Connector Ends, Full Encapsulated Body Seals, Self-Cleaning, Leak Tight Slotted Seat Design, Bottom Entry Live Loaded Stem

Series	Body	Trim	Seats	Seals	Ends	Operator	Options	Size
FS525	1 - Carbon Steel	2 - Alloy20	D - Delrin	G - Grafoil	SW - Socket Weld	L - Lever Handle	MCB - Media Containment Bonnet	1/4"
		3 - 316SS	H - TFM					3/8"
	2 - Alloy20				TE - Threaded Ends			1/2"
		4 - A276 Grade 410	N - Nova				SE - Stem Extension	3/4"
	3 - 316SS		P - PEEK					1"
		5 - Hastelloy C			BW - Butt Weld			1 1/4"
	5 - Hastelloy C		R - Reinforced Teflon				X - Special	1 1/2"
		X - Special			TSW - Threaded x Socket Weld			2"
	X - Special		T- Teflon (TFE)					
			U - UHMWPE					

FS525	1	3	D	G	TE		-.50
Series	Body	Trim	Seats	Seals	Ends	Options	Size

### Description:

1/2" 2000 PSI, 3-Piece High Performance Design, Threaded End Ball Valve, A216-WCB Carbon Steel Body, 316SS Trim, Delrin Seats, Grafoil Seals, NACE MR0175 Compliant, Live Loaded Stem Packing, Fire-tested to API-607, ISO 5211 Mounting Pad, B7M Studs, 2HM Nuts, with Locking Handle Designed in Accordance to B16.34, NACE MR0175, and tested to API 598

**PLEASE NOTE:** There may be some performance variations between the GVC Series FS525 and other manufacturer's comparable body designs. To ensure the longevity of performance, please provide specific information relevant to the requirements needed for each application process.



8535 Jackrabbit Rd., Ste i  
Houston, TX 77095  
866.965.8GVC (482)  
281.463.1474 office  
281.463.7735 fax  
[www.GVCINTL.com](http://www.GVCINTL.com)

Please contact our sales representatives to receive more information regarding your systems particular needs.

Due to the ongoing development of our product line, Global Valve & Controls reserves the right to change the dimensions contained in the leaflet, as required.