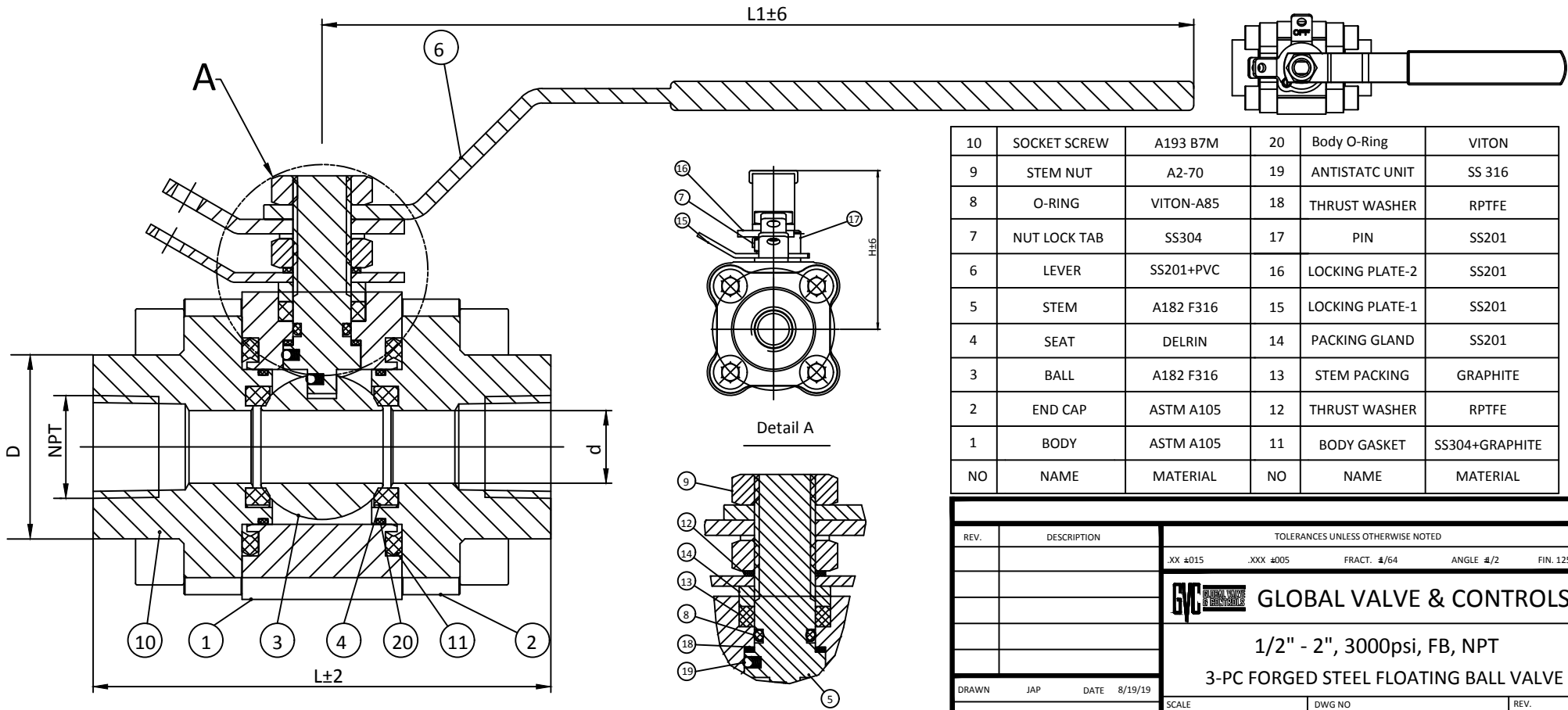


Part No.		NPS	d	D	L	L1	H	NPT	SOCKET SCREW	WEIGHT (KG)
A105	LF2									
F3L104	F3L204	1/2"	15	38	95	160	75.5	1/2" NPT	8-M10	1.76
F3L105	F3L205	3/4"	19	42	115	180	79.5	3/4" NPT	8-M12	2.50
F3L106	F3L206	1"	25	51	125	210	88	1" NPT	8-M14	3.90
F3L108	F3L208	1-1/2"	38	66	155	270	112	1-1/2" NPT	8-M16	7.80
F3L109	F3L209	2"	50	75	176	270	118	2" NPT	8-M16	9.70

1. DESIGN & MANUFACTURE AS PER API 608 & ASME B16.34
2. FACE TO FACE DIMENSION AS PER MANUFACTURER'S SPEC
3. THREADED ENDS DIMENSION COMPLY WITH ANSI B1.20.1
4. VALVE INSPECTION & TEST ACCORDING TO API 598
5. MATERIALS COMPLY WITH NACE MR 0175
6. FIRESAFE IN ACCORDANCE WITH API 607

3000 psi			Mpa
TEST PRESSURE	Shell Test	31.1	
	Back Seat Test		
	Seat Hydro Test		
	Seat Air Test	0.6	
Suitable Temp.		-29~120 °C	
Suitable Media		Water, Steam, Oil etc	



10	SOCKET SCREW	A193 B7M	20	Body O-Ring	VITON
9	STEM NUT	A2-70	19	ANTISTATIC UNIT	SS 316
8	O-RING	VITON-A85	18	THRUST WASHER	RPTFE
7	NUT LOCK TAB	SS304	17	PIN	SS201
6	LEVER	SS201+PVC	16	LOCKING PLATE-2	SS201
5	STEM	A182 F316	15	LOCKING PLATE-1	SS201
4	SEAT	DELTRIN	14	PACKING GLAND	SS201
3	BALL	A182 F316	13	STEM PACKING	GRAPHITE
2	END CAP	ASTM A105	12	THRUST WASHER	RPTFE
1	BODY	ASTM A105	11	BODY GASKET	SS304+GRAPHITE
NO	NAME	MATERIAL	NO	NAME	MATERIAL

REV.	DESCRIPTION	TOLERANCES UNLESS OTHERWISE NOTED			
		.XX #015	.XXX #005	FRACT. #/64	ANGLE #/2 FIN. 125
		GLOBAL VALVE & CONTROLS			
		1/2" - 2", 3000psi, FB, NPT			
		3-PC FORGED STEEL FLOATING BALL VALVE			
DRAWN	JAP	DATE	8/19/19	SCALE	DWG NO
APPROVED	MTR	DATE	8/19/19		0.5"-2"51Q-D3Q111E166-02
					REV. 0.02