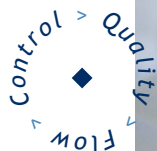




GLOBAL VALVE
& CONTROLS



MEDIA CONTAINMENT BONNET



MEDIA CONTAINMENT BONNET

FS525 ■ FS 150/300 ■ E1

Carbon Steel ■ Stainless Steel



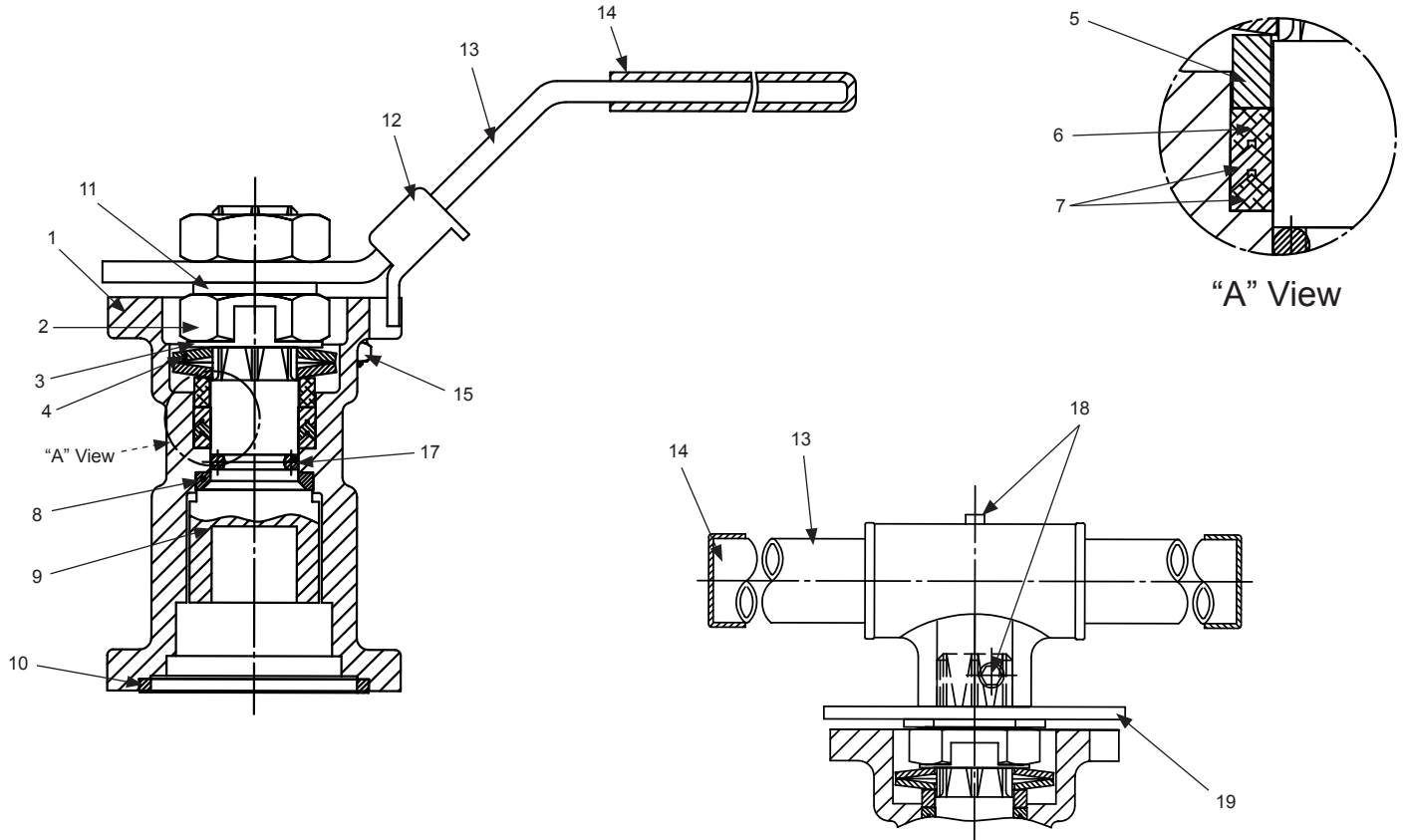
Providing Hundreds of Products. Supporting Thousands of Clients. Controlling Millions of Gallons.

Depend On Us, We Can Handle The Pressure.



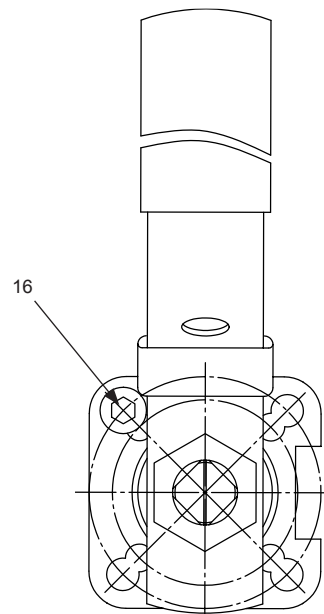
MATERIALS OF CONSTRUCTION

MEDIA CONTAINMENT BONNET



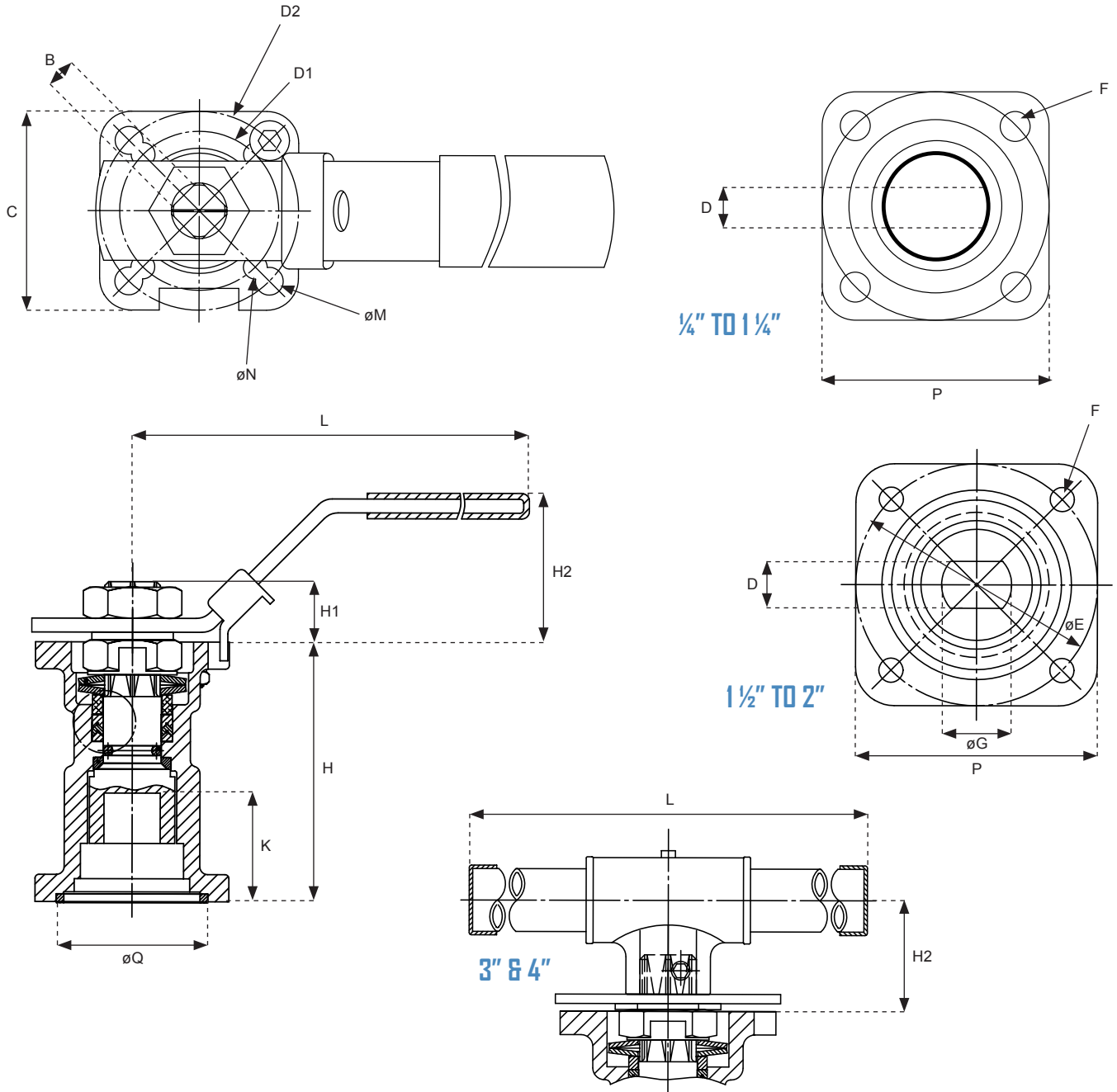
3" & 4" Handle

NO.	PART NAME	MATERIAL
1	Body	CF8M/CF8
2	Stem Nut	SS304
3	Stop Washer	SS304
4	Belleville Washer	SS301
5	Gland Bush	SS304
6	Gland Packing	25% Glass Fiber + PTFE
7	Gland Packing	RTFE, PTFE, TFM
8	Stem Seal	RTFE, PTFE, TFM
9	Stem	SS316
10	Joint Gasket	PTFE, TFM, Grafoil
11	Stem Washer	SS304
12	Locking Device	SS304
13	Handle	SS304
14	Handle Sleeve	VINYL
15	Pin Nut	SS304
16	Stop Pin	SS304
17	Thrust Washer	PTFE, 50/50
18	Bolt	SS304
19	Locking Plate	SS304



ENGINEERING DATA

MEDIA CONTAINMENT BONNET



MCB	B	C	D	D1	D2	øE	F	øG	H	H1	H2	K	L	øM	øN	P	øQ	ISO5211
1/2"	9	42	8	36	42	42	6	11.1	62.7	6.1	35	24.9	139	6	6	42	30.2	F03/F04
3/4"	9	42	8	36	42	42	6	11.1	62.7	6.1	35	24.9	139	6	6	42	30.2	F03/F04
1"	11	50	9.7	40	50	50	7	14.3	67	10.9	39	28	165	7	6	50	39.2	F04/F05
1 1/4"	11	50	9.7	40	50	50	7	14.3	67	10.9	39	28	165	7	6	50	39.2	F04/F05
1 1/2"	14	70	12	50	70	70	9	19.3	86	13.9	49.5	36.3	215	9	7	70	55.2	F05/F07
2"	14	70	12	50	70	70	9	19.3	86	13.9	49.5	36.3	215	9	7	70	55.2	F05/F07
2 1/2"	14	70	12	50	70	70	9	19.3	86	13.9	49.5	36.3	215	9	7	70	55.2	F05/F07
3"	17	92	15	70	102	102	12	24	105	16.8	50	47.4	354	12	10	92	70.2	F07/F10
4"	17	92	15	70	102	102	12	24	105	16.8	50	47.4	354	12	10	92	70.2	F07/F10

*All dimensions are in millimeters

APPLICATION

- GVC's Media Containment Unit (MCB) is designed to mount directly to GVC's flange (FS 150/300, E1) and 3-piece (FS525/525) series valves.

INSTALLATION

- NOTE: Addition of an MCB may increase the valve operating torque by 25%
- To install, remove valve handle or actuator, insure that the thin packing nut (stem nut) is retained by the locking washer (a washer with tab bent to contact one flat of the thin nut). Then place the supplied gasket (PTFE/TFM) into the machined groove on the top face of the valve mounting pad. Place the MCB assembly over the valve stem, insure the valve stem engages the MCB stem slot and secure with the supplied lock washer and cap screws. Tighten evenly using a criss cross pattern. Reinstall the handle or actuator as it was removed.

OPERATION

- With V-ring packings and two sets of Bellevilles, need for adjustment is rare. The packing may be adjusted by flattening the stainless lock washer tab and tightening gently. Tighten carefully, avoid over squeezing and packing. Simply flatten the bellevilles, then back off ½ turn and resecure the lock washer tab. Leakage of the primary valve stem seal can be reviewed through the monitoring port, a ¼" NPT port on the MCB housing. A second port can be opened to allow purge or lubricate.

MAINTENANCE

- GVC's MCB repair kits contain all seals required to rebuild the units. The MCB must be removed from the valve for rebuilding. Follow stem packing adjustment instructions above when installing the new seals, bearings, and packings.

PLEASE NOTE: *To ensure the longevity of performance, please provide specific information relevant to the requirements needed for each application process.*



Office Local 281.463.1474
Fax Numbers 866.964.8536 ▪ 281.463.7735

8535 Jackrabbit Rd., Ste 1
Houston, Texas 77095

www.GlobalValveandControls.com
866.965.8GVC (482)

