



GLOBAL VALVE
& CONTROLS

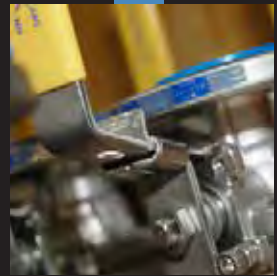


SERIES FS

SERIES FS

FLANGED FULL PORT FIRE SAFE BALL VALVE ANSI 150/300/600

Carbon Steel • 316SS • Alloy 20 • Hastelloy C • Low Temp



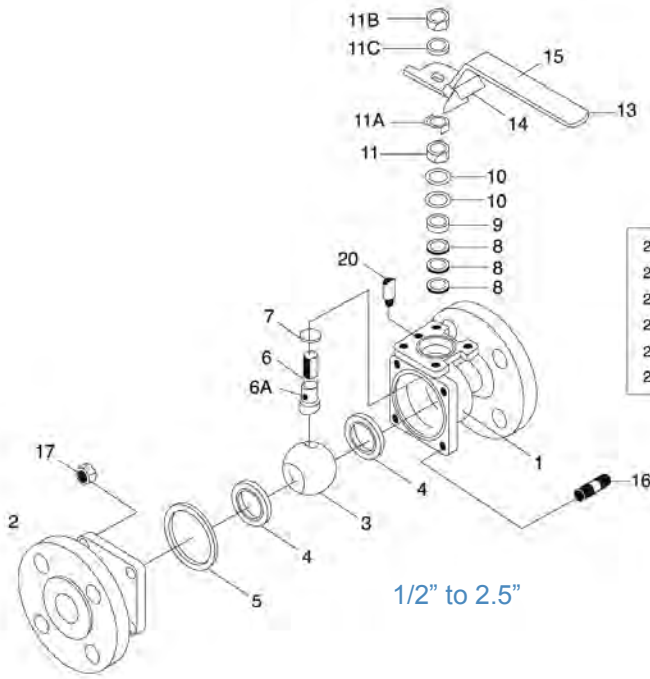
Providing Hundreds of Products. Supporting Thousands of Clients. Controlling Millions of Gallons.

Depend On Us, We Can Handle The Pressure.

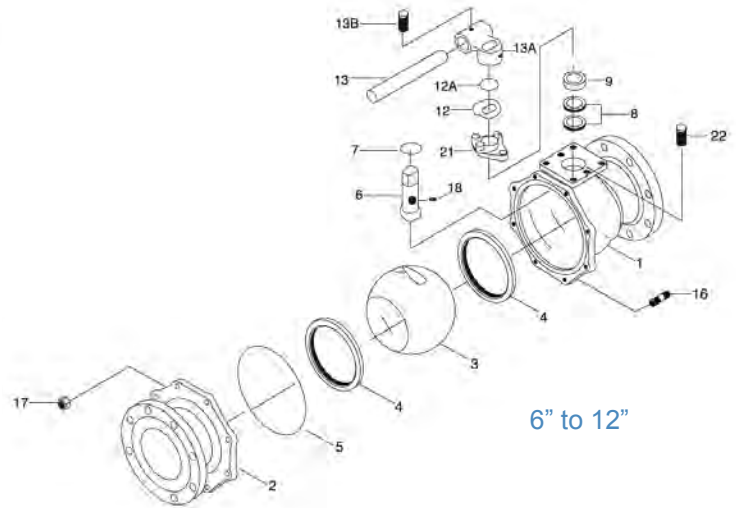
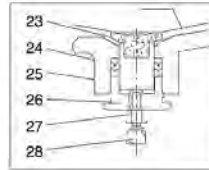


MATERIALS OF CONSTRUCTION

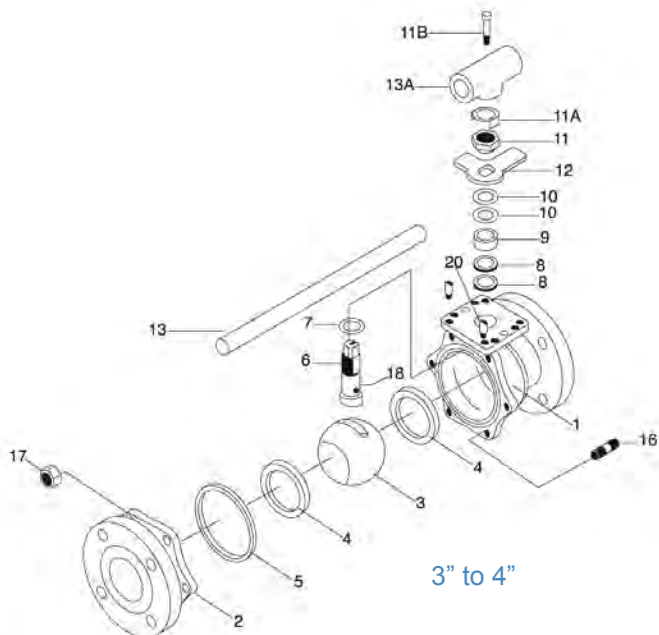
SERIES FS



1/2" to 2.5"



6" to 12"



3" to 4"

Manufacturing & Testing Standards

Body Wall Thickness	ASME B16.34
Butt Weld Ends	ASME B16.25
Flanged Dimensions	ASME B16.5
Face to Face Dim	ASME B16.10
Basic Design	ASME B16.34, API 608
Testing (Options)	ASME B16.34, API 598
Firesafe	API 607 4th Edition

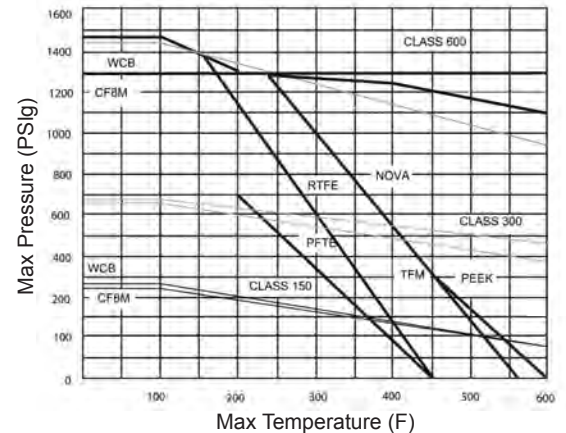
MATERIALS OF CONSTRUCTION & ENGINEERING DATA



NO.	PART NAME	QTY	MATERIAL
1	Body	1	Alloy 20 Carbon Steel Hastelloy C Monel 316 Stainless Steel
2	Flange	1	ASTM A351 CN7M ASTM A216 WCB ASTM A494 Gr CW-12MW ASTM A494 Gr M35-1 ASTM A351 CF8M
3	Ball	1	Alloy 20 / Hastelloy C / Monel / 316 Stainless Steel
4	Seat	2	NOVA / PEEK / RTFE / TFE / TFM / UHMWPE
5	Body Seal	1	NOVA / RTFE / TFE / TFM / UHMWPE
6	Stem	1	Alloy 20 / Hastelloy C / 14-4PH / 316 Stainless Steel
6A	Anti-Static Device (1/2" to 2")	1	316 Stainless Steel
7	Thrust Bearing	2	PEEK
8	Stem Packing	2	NOVA / RTFE / TFE / TFM / Grafoil
9	Gland Packing	1	304 Stainless Steel
10	Belleville Washer (1/2" to 4")	2/4	301 Stainless Steel / Inconel 750
11	Packing Nut (1/2" to 4")	1	304 Stainless Steel
11A	Locking Tab	1	304 Stainless Steel
11B	Lever Nut	1	304 Stainless Steel
11C	Lock Washer (1/2" to 4")	1	304 Stainless Steel
12	Lever Stop	1	304 Stainless Steel
13	Lever	1	304 Stainless Steel (1/2" to 2") Galvanized Steel (2 1/2" to 4") Ductile Iron (6" to 8")
13A	Wrench Block	1	304 Stainless Steel (2 1/2" to 4") Ductile Iron (6" to 8")
13B	Lever Nut	1	304 Stainless Steel
14	Locking Device (1/2" to 2")	1	304 Stainless Steel
15	Lever Cover	1	Vinyl
16	Body Stud	See	B7M, B7, B8, Alloy 20
17	Nut	Dimensions	2HM, 2H, 8M, Alloy 20

NO.	PART NAME	QTY	MATERIAL
18	Anti-Static Device	2	316 Stainless Steel
20	Stop Pin	1	304 Stainless Steel
		2	304 Stainless Steel
21	Gland Flange	1	Carbon Steel 316 Stainless Steel
22	Gland Bolt	2	304 Stainless Steel
23	Ball Supporter Seat (10" to 12") 150 lb (6" to 12") 300 lb	1	RTFE
24	Packing (10" to 12") 150 lb (6" to 12") 300 lb	3	TFE / RTFE / TFM NOVA / Grafoil
25	Ball Supporter (10" to 12") 150 lb (6" to 12") 300 lb	1	304 Stainless Steel
26	Bushing (10" to 12") 150 lb (6" to 12") 300 lb	1	304 Stainless Steel
27	Bushing Nut (10" to 12") 150 lb (6" to 12") 300 lb	1	304 Stainless Steel
28	Adjust Screw (10" to 12") 150 lb (6" to 12") 300 lb	1	304 Stainless Steel

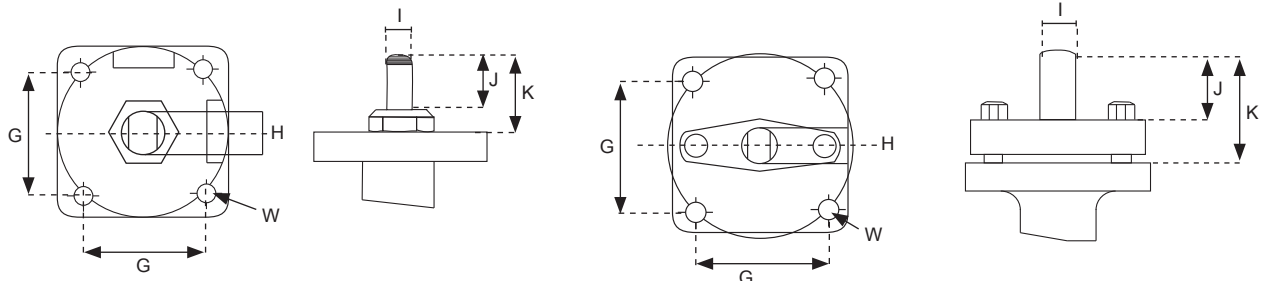
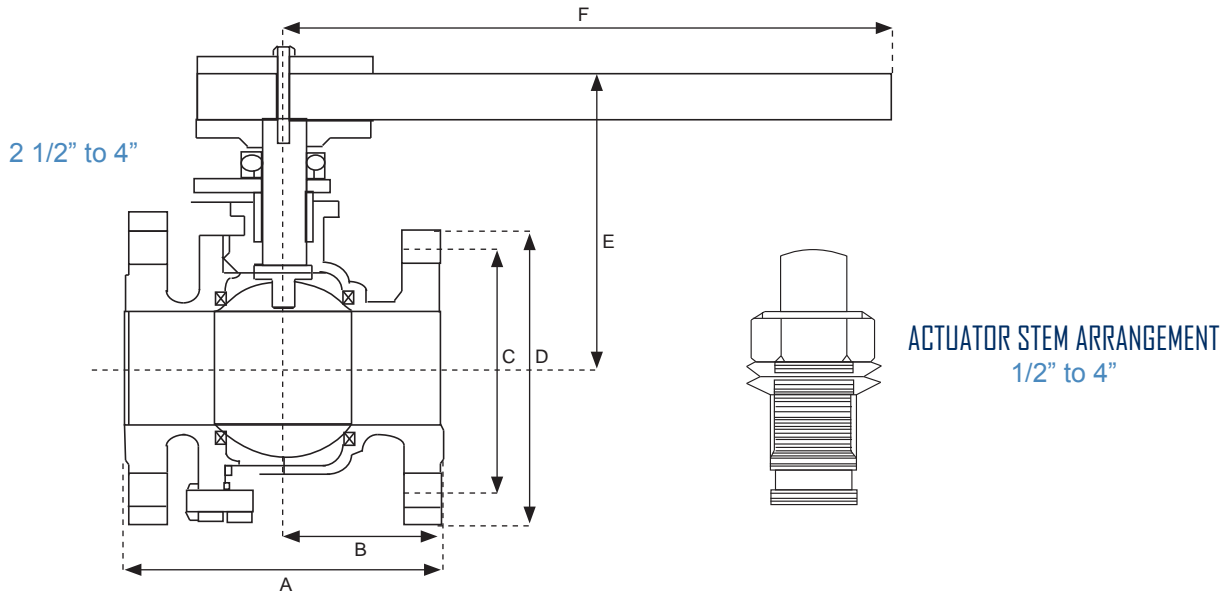
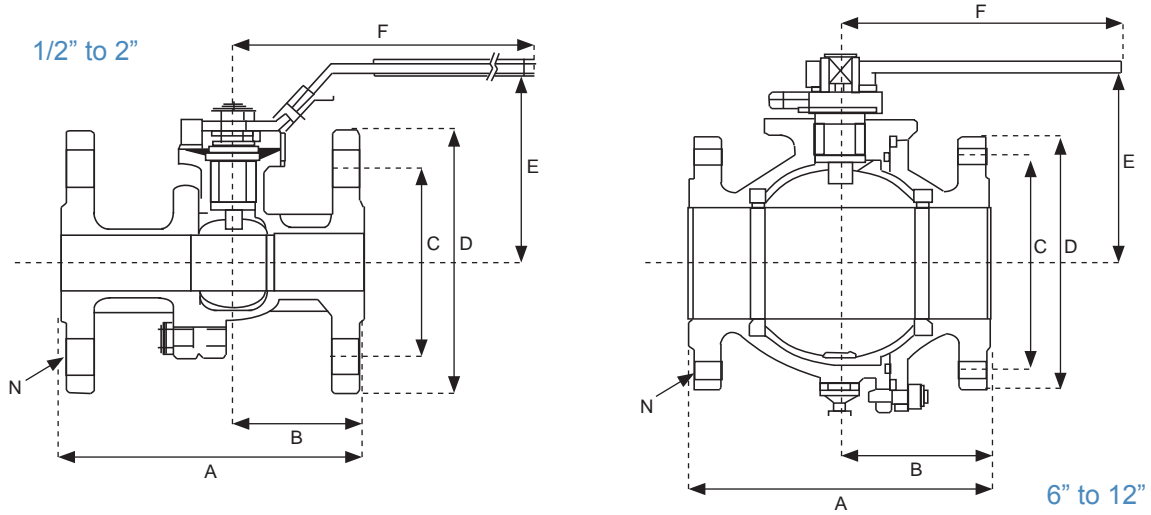
Pressure Temperature Ratings





ENGINEERING DATA

SERIES FS



1/2" to 4"

6" to 12"

ENGINEERING DATA SERIES FS



DIM	A			B			C			D			E		
CLASS	150	300	600	150	300	600	150	300	600	150	300	600	150	300	600
1/2"	4.25	5.50	6.50	1.80	2.44	3.25	2.38	2.62	2.62	3.50	3.75	3.75	2.60	3.75	1.80
3/4"	4.62	6.00	7.50	2.00	2.72	3.40	2.75	3.25	3.25	3.85	4.62	4.62	2.91	2.92	3.68
1"	5.00	6.50	8.50	2.12	2.92	4.25	3.13	3.50	3.50	4.25	6.12	4.88	3.45	3.43	3.80
1 1/2"	6.50	7.50	9.50	2.76	3.26	4.75	3.56	4.50	4.50	5.00	6.15	6.12	4.20	4.15	4.63
2"	7.00	8.50	11.50	3.08	3.94	5.47	4.75	5.00	5.00	6.00	6.50	6.50	4.50	4.53	5.00
2 1/2"	7.50	9.50	-	3.09	4.05	-	5.50	5.86	-	7.00	7.50	-	6.70	6.70	-
3"	8.00	11.12	14.00	3.74	5.40	6.18	6.00	6.62	6.52	7.48	8.25	8.25	7.00	7.00	7.20
4"	9.00	12.00	17.00	4.46	5.93	-	7.50	7.88	-	9.01	10.00	-	7.70	7.70	-
6"	15.50	15.87	-	7.61	7.60	-	9.50	10.63	-	10.98	12.50	-	11.22	11.22	-
8"	18.00	19.75	-	8.34	9.33	-	11.75	13.00	-	13.50	15.00	-	11.57	12.71	-
10"	21.00	22.37	-	10.47	11.18	-	14.25	15.25	-	15.98	17.50	-	13.70	15.28	-
12"	24.00	25.51	-	12.00	12.80	-	17.00	17.75	-	19.01	20.50	-	13.50	15.08	-

DIM	F			N			G			H			I		
CLASS	150	300	600	150	300	600	150	300	600	150	300	600	150	300	600
1/2"	6.50	6.50	4.98	4	4	4	1.39	1.39	1.39	0.48	1/2 - 20 UNF		0.25	0.295	
3/4"	6.50	6.50	4.98	4	4	4	1.39	1.39	1.39	0.48	1/2 - 20 UNF		0.25	0.295	
1"	7.87	7.87	5.77	4	4	4	1.39	1.39	1.39	0.60	9/16 - 18 UNF		0.35	0.393	
1 1/2"	9.85	9.85	7.54	4	4	4	1.94	1.94	1.95	0.68	3/4 - 16 UNF		0.39	0.472	
2"	10.45	10.50	7.54	4	8	8	1.94	1.94	1.95	0.63	3/4 - 16 UNF		0.39	0.472	
2 1/2"	13.75	13.75	-	4	8	-	2.84	2.84	-	0.95	-		-	-	
3"	13.75	13.75	13.75	4	8	8	2.84	2.84	2.84	0.95	1 - 20 UNF		0.63	0.745	
4"	13.75	13.75	-	8	8	-	2.84	2.84	-	1.14	-		0.71	-	
6"	38.97	38.97	-	8	12	-	3.48	3.48	-	1.72	-		0.95	-	
8"	38.97	38.97	-	8	12	-	3.48	3.48	-	1.72	-		-	-	
10"	G.O.	G.O.	-	12	16	-	3.90	3.48	-	1.96	-		-	-	
12"	G.O.	G.O.	-	12	16	-	3.90	3.90	-	1.96	-		-	-	

DIM	J			K			W			ØZ	PORT DIA (IN)			WEIGHT (LBS)			APPROX CV DATA
CLASS	150	300	600	150	300	600	150	300	600	150	150	300	600	150	300	600	ALL CLASSES
1/2"	0.39	0.39	0.49	0.63	0.63	0.74	M5	M5	M6	1.65	0.59	0.59	0.59	4	5	6	26
3/4"	0.39	0.39	0.49	0.63	0.63	0.79	M5	M5	M6	1.65	0.78	0.78	0.78	6	7	8	50
1"	0.44	0.50	0.61	0.90	0.90	0.93	M6	M6	M6	1.96	1.00	1.00	1.00	8	10	11.5	94
1 1/2"	0.63	0.55	0.84	1.18	1.18	1.22	M8	M8	M8	2.75	1.50	1.50	1.50	15	19	22	260
2"	0.63	0.55	0.84	1.18	1.18	1.22	M8	M8	M8	2.75	2.00	2.00	2.00	20	33	38	480
2 1/2"	0.82	-	-	1.83	1.83	-	M10	M10	-	4.01	2.55	2.55	-	36	50	-	750
3"	0.82	0.90	0.69	1.83	1.83	1.67	M10	M10	M10	4.01	3.00	3.00	3.00	45	68	78	1300
4"	1.00	1.13	-	1.83	1.83	-	M10	M10	-	4.01	4.00	4.00	4.00	75	96	188	2300
6"	1.77	1.77	-	3.35	3.35	-	M12	M12	-	-	6.00	6.00	-	135	230	-	5400
8"	-	-	-	3.86	3.86	-	M12	M12	-	-	7.88	7.88	-	290	430	-	10000
10"	-	-	-	3.74	3.91	-	M16	M16	-	-	9.84	9.84	-	540	810	-	15000
12"	-	-	-	3.74	3.82	-	M16	M16	-	-	11.81	11.81	-	660	902	-	21000

Units in mm

FEATURES & OPTIONS

SERIES FS

- API 607 4th Edition Fire Safe Tested
- API 608 & 6D compliant
- Split body, full port and reduced port design per ASME B16.34
- Blow out proof, anti-static stem design
- Belleville spring, live loaded stem seals with Fugitive emissions capability
- Floating ball design prevents cavity pressure build-up while the valve is open
- Fully encapsulated body seals prevent seal rupture in steam or high pressure services
- ISO 5211 integral mounting pad allows for easy mounting of actuators or media containment bonnet
- OSHA compliant locking handle
- Self-cleaning, leak-tight slotted seat design
- Wide choice of seat and seal material options
- Fully encapsulated seats
- Traceability in the form of heat numbers and CMTRS

ORDERING INFORMATION

Size	Series	Class	Body	Trim	Seats	Seals	Ends	Options
1/2"	FS- Full port	150	1 - Carbon	1 - Carbon	D - Devlon	G - Grafoil	BW - Butt	O2 - Oxygen
3/4"	RFS –	300	Steel	Steel	H - TFM		Weld	Prep
1"	Reduced port	600	2 - Alloy 20	2 - Alloy 20	N - Nova		RF - Raised	L - Lever
1-1/4"			3 - 316SS	3 - 316SS	P - PEEK		Face	Handle
1-1/2"			5 - Hastelloy C	4 - A276 Grade	R - Reinforced		RTJ - Ring	MCB - Media
2"			L - A350 Grade	410	Teflon		Type	Containment
2 1/2"			LF2	5 - Hastelloy C	T - Teflon		Joint	Bonnet
3"			X - Special	L - A350 Grade	U - UHMWPE			SE - Stem
4"			6 - A352	LF2				Extension
6"			LC2	X - Special				GO - Gear
8"			9 - F51 Duplex	6 - A352				Operator
10"			Stainless	LC2				PR - Prep for
12"				9 - F51 Duplex				Automation
				Stainless				

PLEASE NOTE: There may be some performance variations between the GVC Series FS and other manufacturer's comparable body designs. To ensure the longevity of performance, please provide specific information relevant to the requirements needed for each application process.



Office Local 281.463.1474
 Fax Numbers 866.964.8536 ← 281.463.7735
 8535 Jackrabbit Rd., Ste I
 Houston, Texas 77095
www.GlobalValveandControls.com
 866.965.8GVC (482)

